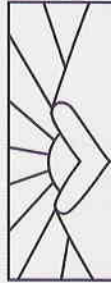
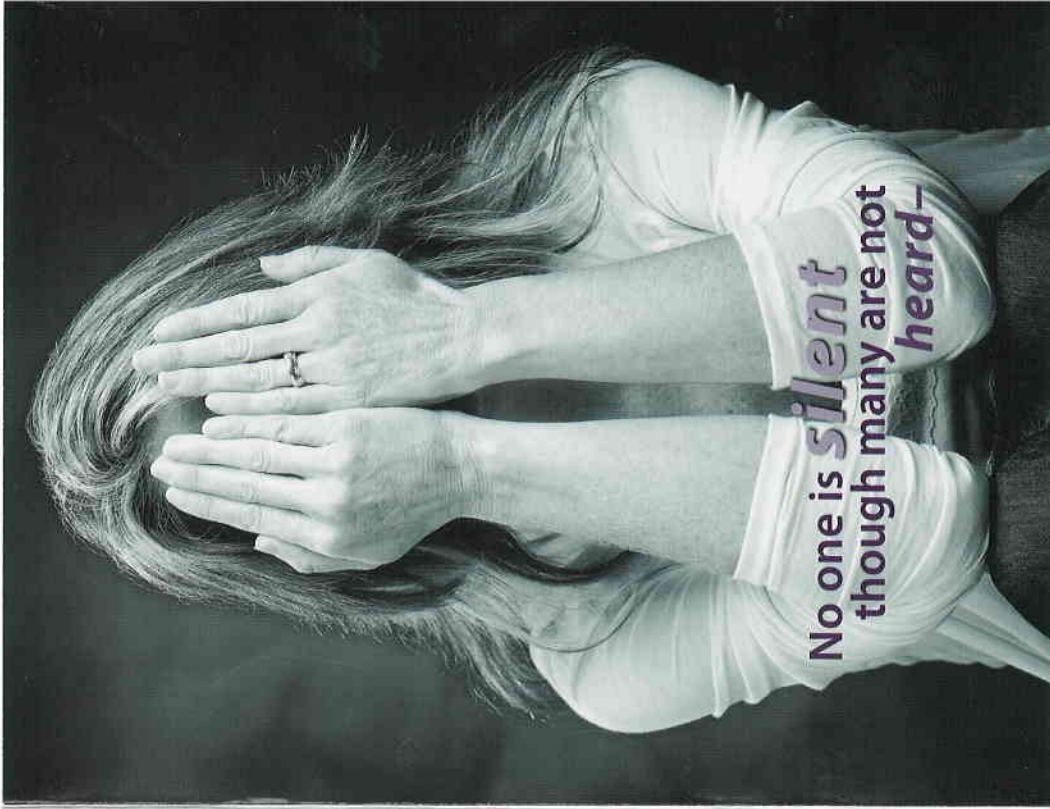


Purchase our beautiful specialty license plate when you register (and re-register) your car, and \$20 will be donated directly to The Abbie Shelter.

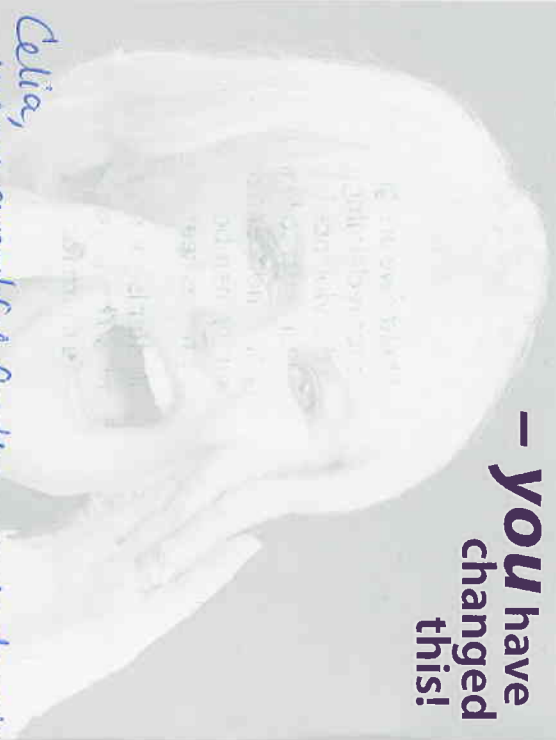


THE ABBIE SHELTER
AND VIOLENCE FREE CRISIS LINE

PO Box 1401 • Kallispeil, MT 59903-1401
Office: (406) 752-4735 • www.abbieshelter.org



**- YOU have
changed
this!**



*Celia,
We are grateful for the recent donation
from the Luise Hass Donor advised fund
for professional development for our
Executive Director (me!). This support
is so valuable for me in my growth and
leadership and I am grateful to the
community foundation for
helping me in my journey!
Warmly, Hilary*

**Promoting safety, independence and empowerment
to victims of domestic and sexual violence**

thank you

Dear *Celia Cudiamat*

Every day at The Abbie Shelter we are grateful to witness survivors of violence reclaiming their lives and their confidence. On the Violence Free Crisis Line, hundreds of people call every year to learn how to plan for their own safety and independence. Because of the support of community members like you, our doors stay open and the phones keep ringing.

Supporting The Abbie Shelter is your voice against violence in our community. **Thank you for helping us to make "home" a safe place for everyone!**

In Gratitude,
Hilary Shaws
Executive Director

Your tax-deductible donation of \$ *n/a*
was received on _____ Tax ID: 81-0361221



THE ABBIE SHELTER
AND VIOLENCE FREE CRISIS LINE