

Organization / Agency Information

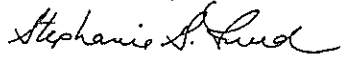
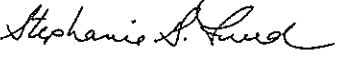
Organization/Agency Name: Rapha House Interational, Inc.		
Physical Address: 712 S Main St		City/State/Zip Joplin, MO 64801
Mailing Address: PO Box 1569		City/State/Zip Joplin, MO 64802
CEO or Director: Stephanie Freed		Title: Executive Director
Phone: 417-621-0373	Fax: N/A	Email: sfreed@raphahouse.org
Contact Person: Travis Buchan		Title: Chief Financial Officer
Phone: 417-621-0373 ext 706	Fax: N/A	Email: tbuchan@raphahouse.org
Web Site Address: raphahouse.org		Tax ID: 27-2523416

Program / Grant Information

Interest Area: Animal Protection Education Environment Health Human Dignity

Program/Project Name: Counseling for Child Survivors			Amount of Grant Requested: \$50,000
Total Organization Budget: \$2,985,809	Per 990, Percentage of Program Service Expenses (Column B/ Column A x 100): 87%	Per 990, Percentage of Management & General Expenses Only (Column C / Column A x 100): 6%	Per 990, Percentage of Management & General Expenses and Fundraising (Column C+D / Column A x 100): 7%
Purpose of Grant Request (one sentence): To provide regular, high-quality counseling services to child survivors of trafficking and sexual exploitation.			
Program Start Date (Month and Year): July 2019		Program End Date (Month and Year): June 2020	
Gimbel Grants Received: List Year(s) and Award Amount(s) 2011 (\$25,000), 2013 (\$25,000), 2014 (\$50,000)			

Signatures

Board President / Chair (print name and title):	
Signature:  Stephanie Freed, Board Chair	Date: 02/28/2019
Executive Director/President (print name and title):	
Signature:  Stephanie Freed, Executive Director	Date: 02/28/2019



**2019 S. L. Gimbel
Foundation Fund
Grant Application**

Internal Use Only:
Grant No: _____

Organization / Agency Information

Organization/Agency Name: Rapha House International Inc		
Physical Address: 712 S Main St Joplin, MO 64801		
Mailing Address: PO Box 1569 Joplin MO 64802		
CEO or Director & Title: Mrs. Stephanie Freed, CEO		
Phone: (417) 621-0373	Fax:	Email: sfreed@raphahouse.org
Contact Person & Title: Travis Buchan, CFO		
Phone: (417) 621-0373	Fax:	Email: tbuchan@raphahouse.org
Web Site Address: http://raphahouse.org		Tax ID: 272523416

Program / Grant Information

Program Area: Human Dignity

Program/Project Name: Counseling for Child Survivors		Amount of Grant Requested: \$50,000	
Total Organization Budget: \$2,985,809	Per 990, Percentage of Program Service Expenses (Column B/ Column A x 100): 87%	Per 990, Percentage of Management & General Expenses Only (Column C / Column A x 100): 6%	Per 990, Percentage of Management & General Expenses and Fundraising (Column C+D / Column A x 100): 7%
Purpose of Grant Request (one sentence): To provide regular, high-quality counseling services to child survivors of trafficking and sexual exploitation in Southeast Asia and Haiti.			
Program Start Date (Month and Year): 7/1/2019		Program End Date (Month and Year): 6/30/2020	
Gimbel Grants Received: List Year(s) and Award Amount(s) 2011 - \$25,000 2013 - \$25,000 2014 - \$50,000			

2019 S.L. Gimbel Foundation Fund APPLICATION

Narrative

I. Organization Background

The mission of Rapha House is to end the trafficking and sexual exploitation of children through aftercare for survivors, prevention for the vulnerable, and awareness for all.

The Rapha House model is to find native people who are qualified and passionate about combating the issues of child slavery and sexual exploitation in their own countries, and equipping them to combat on behalf of these children. Rapha is a Hebrew word which means "healing." And healing is the heartbeat of Rapha House.

Organizational Accomplishments:

In Chiang Mai, Thailand we established a child friendly investigation room which makes it possible for police to interview child survivors in a setting more appropriate and comfortable than the police station. We also established a computer lab and library for survivors.

In Haiti we provided aftercare services to twenty one survivors of sexual exploitation as well as the seven babies born to them in a single year. We have recently acquired land and begun construction on a new state of the art aftercare facility despite political upheaval and unrest.

In Battambang, Cambodia we recently established an operational art therapy center for child survivors. Additionally we started a program-wide "Cambodia's Got Talent" program for girls to showcase and have fun with their song and dance abilities.

In Siem Reap, Cambodia we have added an additional housing unit to care for more child survivors.

Program Activities:

Our program demographic includes children aged 18 and under across our locations in Haiti, Cambodia, and Thailand.

Our aftercare programs, also known as safe houses, give child survivors of slavery and sexual exploitation the chance to reclaim their lost childhood. Each day girls are treated with love and value instead of abuse and neglect. Our safe houses are staffed by trained experts from the local community who understand the culture and know how to work with children through comprehensive and trauma-informed care. By walking with these girls on their healing journey, we are helping them reach a life of sustainable freedom.

Our prevention sponsorship programs, known as Kids Club, reach out to impoverished communities where children are likely to be victimized. By sponsoring a Kids Club child, partners make it possible for an at-risk boy or girl to go to school and receive health services. We want to do everything we can for these children to prevent them from being trafficked. Child sponsorship is simple. Prevention makes sense.

Our awareness program has a global reach - including the production of a feature-length documentary which has been featured in the past on Netflix and translated into 25 languages in 190 countries.

II. Project Information:

A) Statement of Need

There is a great need for regular, high-quality counseling services for child survivors of trafficking and sexual exploitation in Southeast Asia and Haiti. Specifically, young girls aged 13-18 who have experienced such a deep trauma are in need of highly skilled, trauma-informed counselors to provide long term services during the road to recovery.

B) Project Description

The grant project will provide much needed resources to fund counselors for girls from local communities who are in need of specialized counseling services. These counselors will be able to meet with child survivors of trafficking and sexual exploitation on a regular basis. The counseling sessions should help the target population in the community see marked improvements in positive coping, attitude, activities of daily living, and risk-free behaviors. This program is utilizing technological innovation through a custom-built Salesforce database to provide regular updates on the frequency of counseling visits for such clients. Additionally, we hope to add an additional layer of statistical validation during the grant period by implementing a new tool known as ASO (assessment of survivor outcomes) which was developed by a partner organization and proven as a valid tool through extensive expert research.

C) Project Goal, Objectives, Activities & Expected Outcomes

Project Goal:

Provide regular, high-quality counseling services to child survivors of trafficking and sexual exploitation in Southeast Asia and Haiti.

Project Objectives:

Counsel 120 girls an average of twice per month for twelve months.

Program Activities:

Our program demographic includes children aged 18 and under across our locations in Haiti, Cambodia, and Thailand.

Our aftercare programs, also known as safe houses, give child survivors of slavery and sexual exploitation the chance to reclaim their lost childhood. Each day girls are treated with love and value instead of abuse and neglect. Our safe houses are staffed by trained experts from the local community who understand the culture and know how to work with children through comprehensive and trauma-informed care. By walking with these girls on their healing journey, we are helping them reach a life of sustainable freedom.

Our prevention sponsorship programs, known as Kids Club, reach out to impoverished communities where children are likely to be victimized. By sponsoring a Kids Club child, partners make it possible for an at-risk boy or girl to go to school and receive health services. We want to do everything we can for these children to prevent them from being trafficked. Child sponsorship is simple. Prevention makes sense.

Our awareness program has a global reach - including the production of a feature-length documentary which has been featured in the past on Netflix and translated into 25 languages in 190 countries.

Expected Outcomes:

We expect to provide 120 girls with counseling services at least twice per month for twelve months.

Evaluation:

5. Evaluation

Use Rapha House's Salesforce database to track monthly participation of 120 girls in counseling visits over twelve month period. Account for any higher or lower rates of participation than anticipated.

D) Timeline

Provide a timeline for implementing the project. State the start date and ending date of the project, include timeframes for specific activities, as appropriate.

The project timeline can begin as soon as funding is available. We expect the timeline to be the period from July 1, 2019 through June 30, 2020. During this time the target population will receive regular counseling sessions as measured on a monthly basis.

E) Target Population

Who will this grant serve? How many people will be impacted? Provide a breakdown: Number of Children, Youth, Adults, Seniors, Animals.

This grant will serve girls aged approximately 13-18 in Southeast Asia and Haiti who have been trafficked or sexually exploited. Specifically, the girls served will be the 120 who are living in our full-time residential aftercare facilities.

F) Projects in the Community

How does this project relate to other existing projects in the community? Who else in the community is providing this service or has a similar project? Who are your community partners (if any)? How are you utilizing volunteers?

There are few existing venues for child survivors from our target population to receive regular counseling services. There are even fewer venues which offer the quality of services which we aim to achieve. However, we do work closely with government and nonprofit entities such as IBESR (social services) in Haiti who provide us with referrals of children in need. Due to the sensitive and private nature of our services, we do not regularly utilize volunteers in these contexts.

G) Use of Grant Funds

How will you use the grant funds?

Grant funds will be used so that fifteen full-time counselors across four international locations can provide regular counseling services to 120 girls over a one year period. Grant funds will also fund a highly trained project coordinator to oversee the project and ensure strong outcomes.

III. Project Future

A) Sustainability

Rapha House believes that our fundraising strategies centered around monthly recurring revenue will help sustain this counseling project after the grant performance period is concluded.

Specifically, this fundraising strategy has proven successful so far as a reliable stream of revenue. The need for counseling child survivors is great and every dollar will help us fulfill our mission.

IV. Governance, Executive Leadership and Key Personnel/Staff Qualifications

A) Governance

Rapha House's board of directors includes seven individuals who are community and industry leaders. The board is comprised of a majority of independent voting members, and convenes regularly in service of nonprofit best practices. The board maintains an audit committee. The board members make decisions through careful discussion, research, and consideration during board meetings. However, they also maintain communication and research throughout the year to stay updated on key issues to make appropriate decisions.

B) Management

Describe the qualifications of key personnel/staff responsible for the project.

The project coordinator, Robin Blair, has a PhD in Clinical Psychology from Fuller Seminary in Pasadena, California. She has instructed university classes on topics such as cross-cultural psychology, counseling, and perspectives in Cambodia.

The counselors at program locations have years of experience in counseling trafficked and exploited girls, with some having as many as ten years of experience. These counselors are national citizens from the local communities who are able to combine deep cultural understanding with relevant best practices

S.L. Gimbel Foundation APPLICATION

Organization Name:

Rapha House International Inc

V. Project Budget and Narrative (Do not delete these instructions on your completed form).

A) **Budget Table:** Provide a detailed line-item budget for your **entire** project by completing the table below.

Requested line items should be limited to Ten (10) line items. The less the better.

A breakdown of specific line item requests and attendant costs should include:

- 1) Line item requests for materials, supplies, equipment and others:
 - a. Identify and list the type of materials, supplies, equipment, etc.
 - b. Specify the unit cost, number of units, and total cost**
 - c. Use a formula/equation as applicable. (i.e. 40 books @ \$100 each = \$4000)
- 2) Line item requests for staff compensation, benefits: **Do not use FTE percentages.**
 - a. Identify the position; for each position request, **specify the hourly rate and the number of hours** (i.e. \$20/hr x 20 hours/week x 20 weeks = \$8,000)
 - b. For benefits, provide the formula and calculation (i.e. \$8,000 x 25% = \$2,000)
- 3) Line items on Salaries/Personnel included in budget (contribution or in-kind) but NOT requested from the Gimbel Foundation must be broken down per number 2) above: Provide rate of pay per hour and number of hours.

Line Item Request	Line Item Description <i>(Maximum two lines)</i>	Support From Your Agency	Support From Other Funders	Requested Amount From Gimbel/TCF	Line Item Total of Project
Nine Counselors in Battambang, Cambodia	40 hours/week x \$1.73 per hour x 52 weeks = \$3,600 each x 9 = \$32,400	\$16,200	0	\$16,200	\$32,400
Two Counselors in Siem Reap, Cambodia	40 hours/week x \$1.73 per hour x 52 weeks = \$3,600 each x 2 = \$7,200	\$3,600	0	\$3,600	\$7,200
Two Counselors in Haiti	40 hours/week x \$2.88 per hour x 52 weeks = \$6,000 each x 2 = \$12,000	\$6,000	0	\$6,000	\$12,000
Two Counselors in Chiang Mai, Thailand	40 hours/week x \$2.88 per hour x 52 weeks = \$6,000 each x 2 = \$12,000	\$6,000	0	\$6,000	\$12,000
One Project Coordinator in Joplin, MO, USA	20 hours/week x \$28.84 per hour x 52 weeks = \$30,000	\$15,000	0	\$15,000	\$30,000
Travel	Travel costs for training and oversight	\$800	0	\$3,200	\$4,000
TOTALS:		\$47,600	\$	\$50,000	\$97,600

B) Narrative: The budget narrative is the justification of “how” and/or “why” a line item helps to meet the project deliverables. Provide a description for each line item request as necessary. Explain how the line item relates to the project. If you are requesting funds to pay for staff, list the specific duties of each position. See attached SAMPLE Project Budget and Budget Narrative

1. Nine Counselors in Battambang, Cambodia: Nine full time counselors (40 hours/week x \$1.73 per hour x 52 weeks = \$3,600 each x 9 = \$32,400). Counselors will be responsible for direct client interaction and training on ongoing basis.
2. Two Counselors in Siem Reap, Cambodia: Two full time counselors (40 hours/week x \$1.73 per hour x 52 weeks = \$3,600 each x 2 = \$7,200). Counselors will be responsible for direct client interaction and training on ongoing basis.
3. Two Counselors in Haiti: Two full time counselors (40 hours/week x \$2.88 per hour x 52 weeks = \$6,000 each x 2 = \$12,000). Counselors will be responsible for direct client interaction and training on ongoing basis.
4. Two Counselors in Chiang Mai, Thailand: Two full time counselors (40 hours/week x \$2.88 per hour x 52 weeks = \$6,000 each x 2 = \$12,000). Counselors will be responsible for direct client interaction and training on ongoing basis.
5. Project Coordinator: One part-time coordinator in Joplin, MO with a PhD in clinical psychology to oversee the program (20 hours/week x \$28.84 per hour x 52 weeks = \$30,000)
6. Travel: Airfare and lodging for project coordinator to visit and train at international locations. Two trips, each including \$1,000 for airfare and \$1,000 for lodging. (2 x \$2,000 = \$4,000)

S.L. Gimbel Foundation APPLICATION

VI. Sources of Funding: Please list your current sources of funding and amounts.

Secured/Awarded

Name of Funder: Foundation, Corporation, Government	Amount
Operation Underground Rescue	\$ 250,000
International Disaster Emergency Services	\$ 235,000
doTERRA Healing Hands Foundation	\$ 54,573
N2 Publishing	\$ 40,000
	\$
	\$
	\$
	\$

Pending

Name of Funder: Foundation, Corporation, Government	Amount	Decision Date
doTERRA Healing Hands Foundation (2019 continuation)	\$ 1,000,000	Pledged
	\$	
	\$	
	\$	
	\$	
	\$	

Diversity of Funding Sources: A financially healthy organization should have a diverse mix of funding sources. Complete those categories that apply to your organization using figures from your most recent fiscal year.

Funding Source	Amount	% of Total Revenue	Funding Source	Amount	% of Total Revenue
Contributions	\$ 2,478,631	75 %	Program Fees	\$ 22,845	1 %
Fundraising/Special Events	\$	%	Interest Income	\$ 1,280	0 %
Corp/Foundation Grants	\$ 720,158	22 %	Other: Net Merch	\$ 70,865	2 %
Government Grants	\$	%	Other: Misc	\$ 22,866	0 %

Notes:

Fiscal year 2017 used for application to coincide with audited financials (2018 audited financials not yet completed)
 Grants/funding sources of less than \$40,000 in 2017 not included for simplicity, and large 2019 pending grant displayed. doTERRA has also provided \$1.3 million in 2018 - primarily for construction of an aftercare facility.

S.L. Gimbel Foundation APPLICATION

VII. Financial Analysis

Agency Name: Rapha House International, Inc.

Most Current Fiscal Year (Dates): From January 1, 2017 To: December 31, 2017

This section presents an overview of an applicant organization’s financial health and will be reviewed along with the grant proposal. Provide all the information requested on your **entire organization**. Include any notes that may explain any extraordinary circumstances. Information should be taken from your most recent 990 and audit. **Double check your figures!**

Form 990, Part IX: Statement of Functional Expenses

1) Transfer the totals for each of the columns, Line 25- Total functional expenses (page 10)

(A) Total Expenses	(B) Program service expenses	(C) Management & general expenses	(D) Fundraising expenses
\$ 2,674,769	\$ 2,318,836	\$ 154,904	\$ 201,029

2) Calculate the percentages of Columns B, C, and D, over A (per totals above)

- Program services (B) – A general rule is that at least 75% of total expenses should be used to support programs
- Management & general administration (C) – A general rule is that no more than 15% of total expenses should be used for management & general expenses
- Fundraising (D) – A general rule is that no more than 10% of total expenses should be used for fundraising

(A) Total Expenses	(B) Program service expenses	(C) Management & general expenses	(D) Fundraising expenses
	Columns B / A x 100	Columns C / A x 100	Columns D / A x 100
Must equal 100%	87 %	6 %	7 %

3) Calculate the difference between your CURRENT year budget for management & general expenses and your previous management & general expenses per your 990 (Column C)

Percentage of Organization’s Current Total Budget used for Administration	Column C, Management & general expenses per 990 above	Differential
8 %	6 %	2 %

If the differential is above (+) or below (-) 10%, provide an explanation:

S.L. Gimbel Foundation APPLICATION

Quick Ratio: Measures the level of liquidity and measures only current assets that can be quickly turned to cash. A generally standard Quick Ratio equals 1 or more.

Cash	+ Accounts Receivables	/Current Liabilities	= Quick Ratio
\$1,058,417	\$ 2,156	35,010	30.29

Excess or Deficit for the Year:

Excess or (Deficit) Most recent fiscal year end	Excess or (Deficit) Prior fiscal year end
\$ 641,896	\$ 278,774

Notes:

2018 audit is not yet complete, so numbers from 2017 were provided.

\$638,00 of current assets were restricted for specific purposes such as contributions for construction. In consideration, this would make the Quick Ratio lower. Additionally, a large liability for a line of credit which was subsequently renewed and extended was not included as a current liability. See audited financials for details

	2019	2018	Variance
Operating Income			
General Fund	\$1,725,000	\$1,608,567	\$116,433
Safe House	\$435,000	\$435,501	-\$501
Prevention	\$380,000	\$373,177	\$6,823
Awareness Trips	\$223,000	\$223,063	-\$63
Payroll Support	\$145,000	\$145,862	-\$862
Program Income	\$0	\$0	\$0
Other Income	\$15,000	\$15,288	-\$288
Merchandise Sales	\$108,000	\$108,185	-\$185
Cost of Inventory Sold	-\$59,000	-\$58,908	-\$92
Total Income	\$2,972,000	\$2,850,734	\$121,266
Expenses			
Aftercare	\$1,253,800	\$1,318,151	-\$64,351
US Payroll	\$504,454	\$467,622	\$36,832
Prevention	\$298,555	\$304,058	-\$5,503
Awareness Trips	\$167,000	\$139,752	\$27,248
Contract Service Expenses	\$186,700	\$197,734	-\$11,034
Office Expenses	\$121,000	\$118,324	\$2,676
Facility & Equipment	\$149,000	\$149,246	-\$246
Representation & Travel	\$185,000	\$195,476	-\$10,476
Other Expenses	\$120,300	\$127,617	-\$7,317
Total Expenses	\$2,985,809	\$3,017,978	-\$32,170
Operating Revenue Less Expense	\$ (13,809)	\$ (167,244)	\$ 153,435
Non-Operating Income	\$ 1,000,000	\$ 1,401,443	
Non-Operating Expenditures and Capital Outlays	\$ 2,085,000	\$ 666,589	
*Non-Operating Income and Expenditures refer primarily to funds donated to construct aftercare facilities internationally			

Part IX Statement of Functional Expenses

Section 501(c)(3) and 501(c)(4) organizations must complete all columns. All other organizations must complete column (A).

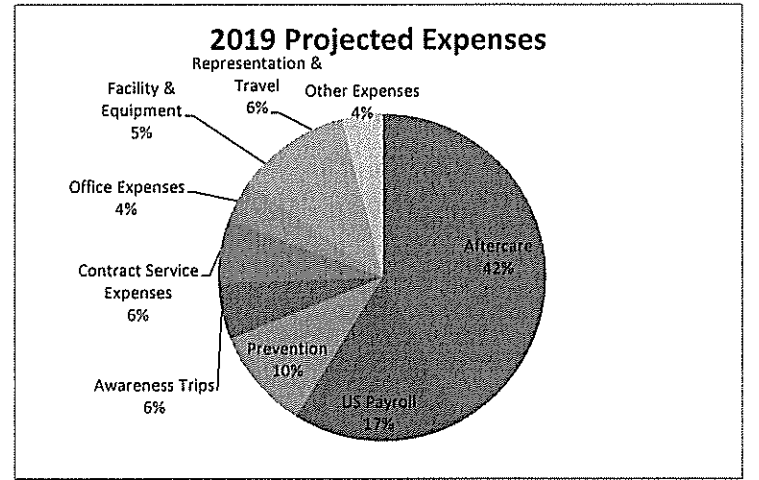
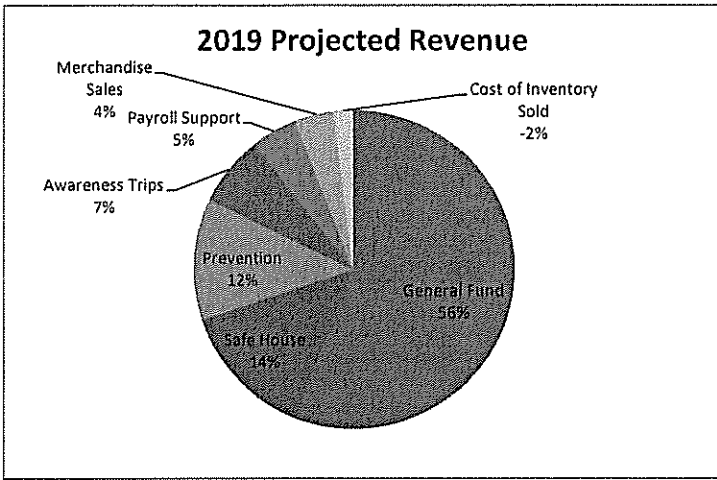
Check if Schedule O contains a response or note to any line in this Part IX

Do not include amounts reported on lines 6b, 7b, 8b, 9b, and 10b of Part VIII.

	(A) Total expenses	(B) Program service expenses	(C) Management and general expenses	(D) Fundraising expenses
1 Grants and other assistance to domestic organizations and domestic governments. See Part IV, line 21				
2 Grants and other assistance to domestic individuals. See Part IV, line 22	3,500	3,500		
3 Grants and other assistance to foreign organizations, foreign governments, and foreign individuals. See Part IV, lines 15 and 16	1,527,644	1,527,644		
4 Benefits paid to or for members				
5 Compensation of current officers, directors, trustees, and key employees	101,824	51,795	32,577	17,451
6 Compensation not included above, to disqualified persons (as defined under section 4958(f)(1)) and persons described in section 4958(c)(3)(B)				
7 Other salaries and wages	216,245	112,940	38,062	65,243
8 Pension plan accruals and contributions (include section 401(k) and 403(b) employer contributions)				
9 Other employee benefits				
10 Payroll taxes	24,288	12,580	5,394	6,314
11 Fees for services (non-employees):				
a Management				
b Legal				
c Accounting	3,778		3,778	
d Lobbying				
e Professional fundraising services. See Part IV, line 17				
f Investment management fees				
g Other. (If line 11g amount exceeds 10% of line 25, column (A) amount, list line 11g expenses on Schedule O.)	192,804	180,558	5,208	7,038
12 Advertising and promotion	48,145	9,629	9,629	28,887
13 Office expenses	46,938	37,550	4,694	4,694
14 Information technology	18,451	6,181	6,099	6,170
15 Royalties				
16 Occupancy	13,912	11,130	1,391	1,391
17 Travel	112,383	76,808	17,788	17,788
18 Payments of travel or entertainment expenses for any federal, state, or local public officials				
19 Conferences, conventions, and meetings				
20 Interest	24,991	8,330	8,330	8,330
21 Payments to affiliates				
22 Depreciation, depletion, and amortization	134,597	131,178	1,710	1,710
23 Insurance	19,463	15,570	1,946	1,946
24 Other expenses. Itemize expenses not covered above (List miscellaneous expenses in line 24e. If line 24e amount exceeds 10% of line 25, column (A) amount, list line 24e expenses on Schedule O.)				
a Awareness Trips	132,499	132,499		
b -----				
c -----				
d -----				
e All other expenses	53,306	942	18,298	34,066
25 Total functional expenses. Add lines 1 through 24e	2,674,769	2,318,836	154,904	201,029
26 Joint costs. Complete this line only if the organization reported in column (B) joint costs from a combined educational campaign and fundraising solicitation. Check here <input checked="" type="checkbox"/> if following SOP 98-2 (ASC 958-720)	48,145	9,629	9,629	28,887

REVENUE			
Revenue Category	2019	2018	2017
General Fund	1,725,000	1,608,567	1,454,527
Safe House	435,000	435,501	459,682
Prevention	380,000	373,177	360,992
Awareness Trips	223,000	223,063	188,805
Payroll Support	145,000	145,862	151,615
Program Income	0	0	22,845
Other Income	15,000	15,288	24,166
Merchandise Sales	108,000	108,185	136,309
Cost of Inventory Sold	-59,000	-58,908	-65,444
TOTAL INCOME	\$ 2,972,000	\$ 2,850,734	\$ 2,733,496
Special Projects	1,000,000	1,401,443	583,169

EXPENSES			
Expense Category	2019	2018	2017
Aftercare	1,253,800	1,318,157	1,243,527
US Payroll	504,454	467,622	342,357
Prevention	298,555	304,058	290,501
Awareness Trips	167,000	139,752	132,499
Contract Service Expenses	186,700	197,734	196,582
Office Expenses	121,000	118,324	113,534
Facility & Equipment	149,000	149,246	148,509
Representation & Travel	185,000	195,476	112,383
Other Expenses	120,300	127,617	94,861
TOTAL EXPENSES	\$ 2,985,809	\$ 3,017,978	\$ 2,674,769
Fixed Asset and Special Projects	2,085,000	666,589	0



NET OPERATING REVENUE

NET REVENUE BY YEAR	2019	2018	2017
Revenue	2,972,000	2,850,734	2,733,496
Expenses	2,985,809	3,017,978	2,674,769
Net Income/Loss	\$ (13,809)	\$ (167,244)	\$ 58,727

RAPHAHOUSE [LOVE-RESCUE-HEAL]

S.L. Gimbel Final Evaluation Report Questions.

- 1. Organization name:** Rapha House International
- 2. Grant #** 20140276
- 3. Grant Period:** May 1, 2014 – April 30, 2015
- 4. Location of Services (City and State):** Grant received from Riverside, CA. Services provided in Cambodia
- 5. Name and Title of person completing evaluation.** Opal Singleton and/or Travis Buchan
- 6. Phone Number:** 417.621.0373
- 7. Email address.** osingle405@aol.com and/or tbuchan@raphahouse.org
- 8. Total number of clients served through this grant funding.** Hundreds of individuals and families have been served or influence through the social work that was funded by this grant. Many were also influenced through the medical training program.
- 9. Describe the project's key outcomes and results based on the goals and objectives.**

Eight survivors received the full training in EEG through hands-on experience and the EEG technology book which we translated from English into Khmer. One survivor pursued nursing school. Three were graduating high school and maintained interest in medical or nursing school.

Through the social worker outreach program, we funded the salaries of four full-time social workers to regularly provide social visits along with salaries for two counselor who helped develop and maintain a training curriculum.
- 10. Please describe any challenges/obstacles the organization encountered (if any) in attaining stated goals & objectives.** Some of the printed materials for the social work program were difficult to develop in a way that would effectively combine the knowledge and expertise of both Cambodian staff and American staff.
- 11. How did the organization overcome and/or address the challenges and obstacles?** Our international Director of Client Services spent many hours discussing the project with all staff members to ensure that effective materials would be produced.
- 12. Describe any unintended positive outcomes as a result of the efforts supported by this grant.** The physician operating with the medical training program was instrumental in improving the health of clients in our safe house programs (not just clients in the community).
- 13. Briefly describe the impact this grant has had on the organization and community served.** The grant improved unity and collaboration between the social workers in various locations within Cambodia. Furthermore, the community education has challenged the social work staff to place a greater emphasis on empowering and educating the girls and families we work with. They are making long-term plans to continue what has been started through the grant.

Support documents (receipts, expense reports or marketing materials) can be emailed to grant-info@thecommunityfoundation.net or faxed to 951-684-1911 or mailed to The Community Foundation, 3700 Sixth St. Suite 200, Riverside, CA 92501

RAPHAHOUSE [LOVE-RESCUE-HEAL]

S.L. Gimbel Final Evaluation Report Questions.

14. Please provide a narrative on how the funds were used to fulfill grant objectives.
15. Please relate a success story. See enclosures for #14-15



RAPHAHOUSE
[LOVE-RESCUE-HEAL]

**LOVE
RESCUE
HEAL**

**S.L. GIMBEL
FOUNDATION
GRANT AWARD
FINAL REPORT 2015**

RAPHAHOUSE [LOVE-RESCUE-HEAL]

S.L. Gimbel Final Evaluation Report Questions.

1. **Organization name:** Rapha House International
2. **Grant #** 20140276
3. **Grant Period:** May 1, 2014 – April 30, 2015
4. **Location of Services (City and State):** Grant received from Riverside, CA. Services provided in Cambodia
5. **Name and Title of person completing evaluation.** Opal Singleton and/or Travis Buchan
6. **Phone Number:** 417.621.0373
7. **Email address.** osingle405@aol.com and/or tbuchan@raphahouse.org
8. **Total number of clients served through this grant funding.** Hundreds of individuals and families have been served or influence through the social work that was funded by this grant. Many were also influenced through the medical training program.
9. **Describe the project's key outcomes and results based on the goals and objectives.** The social work program has seen great success in the level of awareness that the surrounding community has about the dangers of human trafficking. The medical training program saw great success in the training of medical assistants.
10. **Please describe any challenges/obstacles the organization encountered (if any) in attaining stated goals & objectives.** Some of the printed materials for the social work program were difficult to develop in a way that would effectively combine the knowledge and expertise of both Cambodian staff and American staff.
11. **How did the organization overcome and/or address the challenges and obstacles?** Our international Director of Client Services spent many hours discussing the project with all staff members to ensure that effective materials would be produced.
12. **Describe any unintended positive outcomes as a result of the efforts supported by this grant.** The physician operating with the medical training program was instrumental in improving the health of clients in our safe house programs (not just clients in the community).
13. **Briefly describe the impact this grant has had on the organization and community served.** The grant improved unity and collaboration between the social workers in various locations within Cambodia. Furthermore, the community education has challenged the social work staff to place a greater emphasis on empowering and educating the girls and families we work with. They are making long-term plans to continue what has been started through the grant.
14. **Please provide a narrative on how the funds were used to fulfill grant objectives.**
15. **Please relate a success story.** See enclosures for #14-15

Support documents (receipts, expense reports or marketing materials) can be emailed to grant-info@thecommunityfoundation.net or faxed to 951-684-1911 or mailed to The Community Foundation, 3700 Sixth St. Suite 200, Riverside, CA 92501

RAPHAHOUSE [LOVE-RESCUE-HEAL]

Medical Vocational Training
Report By: Hannah Burkle and Dr. Paul Fleenor

EEG Training:

We have 8 girls that received the full training (1 of the girls dropped out of the program, but she was trained in EEG). We made an EEG technology book translated into Khmer. One girl has completed more than 20 studies from the EEG technology book. All eight of the girls have had the opportunity to work on adult and pediatric patients, patients as young as 4 years old. One girl is receiving part-time salary as an EEG technician as a result of the program. 3 hospitals in Phnom Penh and 2 hospitals in Siem Reap have expressed interest in having EEG at their hospital. We are hoping that the EEG training and networking with other hospitals will be a catalyst to building relationships and possibly job trainings or job opportunities for these 8 girls in training for the future.



Caption: The pictures of the girls in their scrubs is during training, they practiced spacing for the electrode pads and reading the EEG's off of the computer. The picture in the upper left hand corner is one of our girls doing a mobile EEG at a clinic in a village.

RAPHAHOUSE [LOVE-RESCUE-HEAL]

Medical Vocational Training
Report By: Hannah Burkle and Dr. Paul Fleenor

The Clinic Girls:

For all 8 of the girls in the program it has opened their eyes to hygiene and medical needs and issues within their own country. Currently, there is one Rapha girl in nursing school (now into her second year). We have 3 girls getting ready to graduate high school. All three are interested in going to medical school and/or nursing school. Two of our younger girls are both interested in going to medical school. Three of our girls have enjoyed the training, but have not yet determined if they want to pursue medical school. The medical training has helped all the girls dream about and consider whether or not they are interested in furthering their education.

We believe this training is a catalyst for all of the girls to when they return to their villages to teach their villages. Many of them have been able to help their families and themselves as they have learned more about healthcare. The training program has included a lot of CNA instruction. The girls have been blessed to have lots of hands-on experience in their training. They have gone to outlying villages to use their skills of history taking, vital signs, and physical examinations of all ages of people.

For example; one of our girls, while taking vital signs, heard a heart murmur in a girl in the village. This girl from the village was then taken for more testing in the nearby city. After more testing, it was established that she would need to have heart surgery. Because of the education and careful check of vital signs this girls life was saved and her quality of life was enhanced. We have been blessed to have some long-term volunteers and some short-term volunteers come and train and expose our girls to the following health topics; hygiene, First Aid, CPR, STD's, diarrhea, diabetes, nutrition, EEG, etc.



Caption: Clinic students are being trained on first aid, basic medical procedures, and practice, in addition to EEG training.

RAPHAHOUSE [LOVE-RESCUE-HEAL]

Social Worker Outreach

Working In The Community:

Social workers are meeting with a family in the community in this photo. Social workers are being trained to record and track data of each family visited and well as methods of educating families. Frequency of community and family visits has been increased.



RAPHAHOUSE [LOVE-RESCUE-HEAL]

Social Worker Outreach

Working As a Team:

Social work team meets regularly from both locations in Cambodia to develop materials to use for community education, as well as to develop timelines for case management and auditing procedures.



RAPHAHOUSE

[LOVE-RESCUE-HEAL]

Rapha House - Gimbel Grant for Period of: May 1, 2014 to April 30, 2015

Summary of Expenses

Grant Line Item / Expense Description	\$ From RH	\$ From Gimbel	\$ Total
Project 1: Social Worker Outreach Programs			
Staff development of training curriculum	\$5,124	\$1,800	\$6,924
Staff delivery of social worker training	\$1,365	\$1,500	\$2,865
4 Social Worker Salaries	\$7,511	\$7,800	\$15,311
Design and print education material for families	\$80	\$800	\$880
Social Work Visits	\$5,753	\$10,298	\$16,051
Computers	\$0	\$717	\$717
Printer	\$0	\$385	\$385
International Flight for U.S. Social Worker	\$336	\$1,700	\$2,036
Project 1 Totals - Social Worker	\$20,169	\$25,000	\$45,169
Budgeted	\$20,630	\$25,000	\$45,630

Project 2: Medical Vocational Training			
EEG Machine and other medical supplies / equipment	\$109	\$15,000	\$15,109
6 Training Scholarships @ \$120 each	\$3,411	\$720	\$4,131
One computer and one printer	\$0	\$659	\$659
Develop / Deliver Training Program	\$25,629	\$8,621	\$34,250
Project 2 Totals - Medical Vocational Training	\$29,149	\$25,000	\$54,149
Budgeted	\$22,520	\$25,000	\$47,520

Summary of Expenses - Total

Total	Actual	\$49,318	\$50,000	\$99,318
Total	Budgeted	\$43,150	\$50,000	\$93,150

Rapha House - Gimbel Grant for Period of: May 1, 2014 to April 30, 2015

Grant Line Item / Expense Description	Date	\$ Amount	\$ From RH	\$ From Gimbel	\$ Total
Project 1: Social Worker Outreach Programs					
Staff development of training curriculum					
Salary for Lead counselor (Chan Syna)	5/23/2014	\$624			
"	6/25/2014	\$624			
"	7/25/2014	\$624			
"	8/25/2014	\$624			
"	9/19/2014	\$624			
"	10/24/2014	\$624			
"	11/25/2014	\$624			
"	12/25/2014	\$624			
"	1/26/2015	\$644			
"	2/25/2015	\$644			
"	3/25/2015	\$644			
Line Item Total		\$6,924	\$5,124	\$1,800	\$6,924
Budgeted			\$1,400	\$1,800	
Staff delivery of social worker training					
Salary for counselor (Hoeus Samidy)	5/23/2014	\$250			
"	6/25/2014	\$250			
"	7/25/2014	\$250			
"	8/25/2014	\$250			
"	9/19/2014	\$250			
"	10/24/2014	\$250			
"	11/25/2014	\$250			
"	12/25/2014	\$250			
"	1/26/2015	\$285			
"	2/25/2015	\$290			
"	3/25/2015	\$290			
Line Item Total		\$2,865	\$1,365	\$1,500	\$2,865
Budgeted			\$800	\$1,500	
4 Social Worker Salaries					
Social Worker (Chen Dany - SRP)	5/26/2014	\$280			
"	6/25/2014	\$280			
"	7/25/2014	\$280			
"	8/25/2014	\$280			
"	9/25/2015	\$280			
"	10/24/2014	\$280			
"	11/25/2014	\$280			
"	12/25/2014	\$280			
"	1/26/2015	\$310			
"	2/25/2015	\$310			
"	3/25/2015	\$310			
Client Service Manager (Seng Soky)	5/26/2014	\$475			
"	6/25/2014	\$475			
"	7/25/2014	\$475			
"	8/25/2014	\$475			
"	9/19/2014	\$475			
"	10/24/2014	\$475			
"	11/25/2014	\$475			
"	12/25/2014	\$475			
"	1/26/2015	\$500			
"	2/25/2015	\$500			
"	3/25/2015	\$500			

Rapha House - Gimbel Grant for Period of: May 1, 2014 to April 30, 2015						
Grant Line Item / Expense Description	Date	\$ Amount	\$ From RH	\$ From Gimbel	\$ Total	
4 Social Worker Salaries (Continued)						
Reintegration Coordinator (Chea Navy)	5/23/2014	\$475				
"	6/25/2014	\$475				
"	7/25/2014	\$475				
"	8/25/2014	\$475				
"	9/19/2014	\$475				
"	10/24/2014	\$475				
"	11/25/2014	\$475				
"	12/25/2014	\$475				
"	1/26/2015	\$500				
"	2/25/2015	\$500				
"	3/25/2015	\$500				
Social Worker (Nhol Sophea)	9/19/2014	\$198				
"	10/24/2014	\$198				
"	11/25/2014	\$220				
"	12/25/2014	\$220				
"	1/26/2015	\$235				
"	2/25/2015	\$235				
"	3/25/2015	\$235				
Line Item Total		\$15,311	\$7,511	\$7,800	\$15,311	
Budgeted			\$7,800	\$7,800		
Design and print education material for families						
Printing	4/17/2015	\$660				
Design work	4/28/2015	\$220				
Line Item Total		\$880	\$80	\$800	\$880	
Budgeted			\$700	\$800		
Social Work Visits						
Family assessments and follow-up	5/31/2014	\$574				
Fuel for Truck (BTB)	5/31/2014	\$598				
Fuel for Vehicles (SRP at 50% ratio)	5/31/2014	\$11				
Vehicle repair	5/31/2014	\$638				
Family assessments and follow-up	6/31/2014	\$103				
Fuel for Truck (BTB)	6/31/2014	\$814				
Family assessments and follow-up	7/31/2014	\$571				
Fuel for Truck (BTB)	7/31/2014	\$820				
Fuel for Vehicles (SRP at 50% ratio)	7/31/2014	\$65				
Vehicle repair	7/31/2014	\$309				
Family assessments and follow-up	8/31/2014	\$460				
Fuel for Truck (BTB)	8/31/2014	\$655				
Fuel for Vehicles (SRP at 50% ratio)	8/31/2014	\$134				
Family assessments and follow-up	9/30/2014	\$428				
Fuel for Truck (BTB)	9/30/2014	\$604				
Fuel for Vehicles (SRP at 50% ratio)	9/30/2014	\$104				
Vehicle repair	9/30/2014	\$533				
Family assessments and follow-up	10/31/2014	\$196				
Fuel for Truck (BTB)	10/31/2014	\$658				
Fuel for Vehicles (SRP at 50% ratio)	10/31/2014	\$113				
Family assessments and follow-up	11/30/2014	\$370				
Fuel for Truck (BTB)	11/30/2014	\$598				
Fuel for Vehicles (SRP at 50% ratio)	11/30/2014	\$147				
Vehicle repair	11/30/2014	\$278				
Family assessments and follow-up	12/31/2014	\$128				
Fuel for Truck (BTB)	12/31/2014	\$422				
Fuel for Vehicles (SRP at 50% ratio)	12/31/2014	\$156				
Vehicle repair	12/31/2014	\$242				

Rapha House - Gimbel Grant for Period of: May 1, 2014 to April 30, 2015

Grant Line Item / Expense Description	Date	\$ Amount	\$ From RH	\$ From	\$ Total
Social Work Visits (Continued)					
9 months Salary for Driver (Mon Saret)	1/31/2015	\$2,130			
Family assessments and follow-up	1/31/2015	\$619			
Fuel for Truck (BTB)	1/31/2015	\$294			
Fuel for Vehicles (SRP at 50% ratio)	1/31/2015	\$81			
1 month salary for driver (Mon Saret)	1/31/2015	\$250			
Family assessments and follow-up	2/28/2015	\$570			
Fuel for Truck (BTB)	2/28/2015	\$406			
Fuel for Vehicles (SRP at 50% ratio)	2/28/2015	\$101			
1 month salary for driver (Mon Saret)	2/28/2015	\$250			
Family assessments and follow-up	3/31/2015	\$159			
Fuel for Truck (BTB)	3/31/2015	\$410			
Fuel for Vehicles (SRP at 50% ratio)	3/31/2015	\$53			
Line Item Total		\$16,051	\$5,753	\$10,298	\$16,051
Budgeted			\$7,280	\$10,000	
2 Computers					
Purchase of laptops	8/17/2014	\$717			
Line Item Total		\$717	\$0	\$717	\$717
Budgeted			\$800	\$800	
Printer and Supplies					
Purchase of printers	7/10/2014	\$385			
Line Item Total		\$385	\$0	\$385	\$385
Budgeted			\$150	\$600	
International Flight for U.S. Social Worker					
International flight for Jennifer Osgood (Traveling to Cambodia and Thailand)	1/15/2015	\$2,036			
Line Item Total		\$2,036	\$336	\$1,700	\$2,036
Budgeted			\$1,700	\$1,700	
Project 1 Totals - Social Worker			\$20,169	\$25,000	\$45,169
Budgeted for the Year			\$20,630	\$25,000	\$45,630

Rapha House - Gimbel Grant for Period of: May 1, 2014 to April 30, 2015					
Grant Line Item / Expense Description	Date	\$ Amount	\$ From RH	\$ From Gimbel	\$ Total
Project 2: Medical Vocational Training					
EEG Machine					
EEG Machine Purchase	1/2/2014	\$11,478			
Other medical supplies and equipment	4/8/2015	\$1,406			
"	4/28/2015	\$889			
"	4/30/2015	\$612			
"	4/30/2015	\$724			
Line Item Total		\$15,109	\$109	\$15,000	\$15,109
Budgeted			\$15,000	\$15,000	
6 Training Scholarships @ \$120 each					
Living support for girls studying medical	5/30/2014	\$120			
"	6/17/2014	\$325			
"	7/16/2014	\$325			
"	8/29/2014	\$260			
"	9/11/2014	\$323			
"	9/18/2014	\$45			
"	10/24/2014	\$45			
"	10/27/2014	\$908			
"	10/30/2014	\$353			
"	12/8/2015	\$400			
"	1/14/2015	\$347			
"	2/16/2015	\$340			
"	3/6/2015	\$340			
Line Item Total		\$4,131	\$3,411	\$720	\$4,131
Budgeted			\$720	\$720	
One computer and one printer					
Dell computer and accessories		\$529			
Printer		\$130			
Line Item Total		\$659	\$0	\$659	\$659
Budgeted			\$400	\$1,400	
Develop / Deliver Training Program					
Pediatric Neurologist (Paul Fleenor)	9/3/2014	\$3,500			
"	10/1/2014	\$3,500			
"	11/5/2014	\$3,500			
"	12/3/2014	\$3,500			
"	1/7/2015	\$3,500			
"	2/4/2015	\$3,500			
"	3/4/2015	\$3,500			
"	4/1/2015	\$3,500			
Nurse (Angela Jackson)	9/17/2014	\$150			
"	10/1/2014	\$350			
"	10/15/2014	\$350			
"	11/5/2014	\$1,000			
"	12/3/2014	\$1,000			
"	1/7/2015	\$850			
"	2/4/2015	\$850			
"	3/4/2015	\$850			
"	4/1/2015	\$850			
Line Item Total		\$34,250	\$25,629	\$8,621	\$34,250
Budgeted			\$7,120	\$7,880	
Project 2 Totals - Medical Vocational Training			\$29,149	\$25,000	\$54,149
Budgeted			\$22,520	\$25,000	\$47,520
GRAND TOTALS			\$49,318	\$50,000	\$99,318
Budgeted			\$43,150	\$50,000	\$93,150

INTERNAL REVENUE SERVICE
P. O. BOX 2508
CINCINNATI, OH 45201

DEPARTMENT OF THE TREASURY

Date:

APR 28 2011

RAPHA HOUSE INTERNATIONAL INC
118 SOUTH MAIN ST
JOPLIN, MO 64802-1569

Employer Identification Number:
27-2523416
DLN:
17053236328020
Contact Person:
CHERYL RICHMOND ID# 52492
Contact Telephone Number:
(877) 829-5500
Accounting Period Ending:
December 31
Public Charity Status:
170(b)(1)(A)(vi)
Form 990 Required:
Yes
Effective Date of Exemption:
April 20, 2010
Contribution Deductibility:
Yes
Addendum Applies:
No

Dear Applicant:

We are pleased to inform you that upon review of your application for tax exempt status we have determined that you are exempt from Federal income tax under section 501(c)(3) of the Internal Revenue Code. Contributions to you are deductible under section 170 of the Code. You are also qualified to receive tax deductible bequests, devises, transfers or gifts under section 2055, 2106 or 2522 of the Code. Because this letter could help resolve any questions regarding your exempt status, you should keep it in your permanent records.

Organizations exempt under section 501(c)(3) of the Code are further classified as either public charities or private foundations. We determined that you are a public charity under the Code section(s) listed in the heading of this letter.

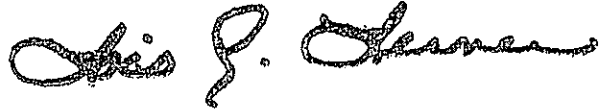
Please see enclosed Publication 4221-PC, Compliance Guide for 501(c)(3) Public Charities, for some helpful information about your responsibilities as an exempt organization.

Letter 947 (DO/CG)

RAPHA HOUSE INTERNATIONAL INC

We have sent a copy of this letter to your representative as indicated in your power of attorney.

Sincerely,

A handwritten signature in cursive script, appearing to read "Lois G. Lerner".

Lois G. Lerner
Director, Exempt Organizations

Enclosure: Publication 4221-PC

2019 Rapha House Board of Directors List

Stephanie Freed – Executive Director

Bill Blair

Dorothy Perconti

James Richards

Kerry Decker

Mark Davis

Opal Singleton