

Internal Use Only:
Grant : _____

Organization / Agency Information

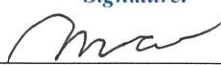

Organization/Agency Name: Laguna Canyon Foundation		
Physical Address: 384 Legion St.	City/State/Zip Laguna Beach, CA 92651	
Mailing Address: PO Box 4895	City/State/Zip Laguna Beach, CA 92652	
CEO or Director: Ms. Hallie Jones	Title: Executive Director	
Phone: 949-497-8324	Fax: 949-376-5590	Email: hallie@lagunacanyon.org
Contact Person: Ms. Theresa Karasek		Title: Development Manager
Phone: 949-497-8324	Fax: 949-376-5590	Email: theresa@lagunacanyon.org
Web Site Address: lagunacanyon.org		Tax ID: 33-0441816

Program / Grant Information

Interest Area: Animal Protection Education Environment Health Human Dignity

Program/Project Name: Laguna Ridge Trail Restoration and Enhancement			Amount of Grant Requested: \$23,553
Total Organization Budget: \$892,193	Per 990, Percentage of Program Service Expenses (Column B / Column A x 100): 79.84%	Per 990, Percentage of Management & General Expenses Only (Column C / Column A x 100): 18.87%	Per 990, Percentage of Management & General Expenses and Fundraising (Column C+D / Column A x 100): 20.16%
Purpose of Grant Request (one sentence): To fund restoration and protection of native habitat and the creation of a safe, enjoyable, and sustainable multi-use trail in Laguna Coast Wilderness Park.			
Program Start Date (Month and Year): January 2017		Program End Date (Month and Year): January 2018	
Gimbel Grants Received: List Year(s) and Award Amount(s) n/a			

Signatures

Board President / Chair: (Print name and Title) Ms. Michelle Kremer, Board President	Signature: 	Date: 9-22-2016
Executive Director/President: (Print name and Title) Ms. Hallie Jones, Executive Director	Signature: 	Date: 9-22-2016

2016 S.L. Gimbel Foundation Fund APPLICATION Narrative

I. Organization Background

A) What are the history, mission and/or purpose of your organization? How long has the organization been providing programs and services to the community?

Laguna Canyon Foundation (LCF) was created in 1990 to reach beyond the usual grassroots level for regional open space preservation. Our mission - to preserve, protect, promote and enhance the 22,000-acre South Coast Wilderness - brings together state, county and city landowners and managers to work in partnership on behalf of wilderness in our increasingly urban county. To this end, we increase public awareness of wilderness, acquire new land for the park system, assist land managers with interpretation and habitat restoration, enhance and maintain trails, and run wilderness education programs for schoolchildren. We work closely with Orange County Parks (OC Parks), primarily in the OC Parks-managed Laguna Coast and Aliso and Wood Canyons Wilderness Parks.

B) What are some of your past organizational accomplishments (last three years)?

- Provided project management and worked to build community support for the 15-acre Nyes-Oro Canyon Fuel Modification Project in collaboration with the City of Laguna Beach. Our conservation-focused, innovative program offered a workable methodology to minimize impacts to high value habitat and sensitive species while adhering to Fire Department fuel hazard abatement requirements.

- Created a comprehensive, parkwide trail plan that includes assessment and implementation of top priority improvements, ongoing maintenance and emergency repairs. Our holistic approach and collaboration with OC Parks resulted in the successful rehabilitation of Lizard Trail, the first trail to be added to the Laguna Coast Wilderness Park trail system since the Park opened.

- Removed invasive *Arundo donax* (giant reed) in a 56-acre portion of Aliso Creek and began ongoing habitat restoration for endangered, threatened, and sensitive plant and animal species. The arundo removal improved water quality and led to a more diverse, resilient riparian ecosystem.

- Expanded the "Keep It Wild" volunteer program, in which LCF staff and volunteers collaborate with OC Parks rangers to accomplish high priority weed management and restoration projects within the wilderness parks.

C) What are your key programs and activities? Describe the communities you serve. Include populations, geographic locations served, and relevant statistics.

- The South Coast Wilderness Education Program offers free standards-based nature programs to underserved schools. Last year, 4,500 students from 12 Title 1 schools throughout Orange County enjoyed field trips into the wilderness parks – for many students, their first time into the open space, and their only field trip of the year.

- Our Volunteer Program coordinates over 150 long-term volunteers to accomplish over 6,000 hours of volunteer work in the parks every year. In addition to assisting with habitat restoration and trail maintenance, our volunteers staff park entrances and offer more than 30 public nature education programs each month through hikes, outdoor workshops and other programs.

- Our Trails Program works with OC Parks on over 70 miles of trails throughout the Wilderness Parks. Our work includes maintenance, restoration, realignment, and construction of new trails. LCF and OC Parks staff work together to minimize human impacts, protect habitat, and foster community investment in the trails and harmony between different trail user groups.

- Our Restoration Program, established in 2011, has completed work on over 100 acres of habitat within the South Coast Wilderness and its surrounding areas. Our work includes invasive species removal and management, seeding and planting of native vegetation, irrigation, monitoring, and transformation of illegal trails back into native habitat.

II. Project Information:

A) Statement of Need

1. Specify the community need you want to address and are seeking funds for.

In 2015, Laguna Canyon Foundation re-routed the top portion of Laguna Ridge Trail, a fall-line, extremely steep trail in Laguna Coast Wilderness Park worn completely down to bedrock. The trail was accessible only for very highly skilled mountain bikers and was almost impassable for hikers - a steep trail through a rocky gully that had become almost unusable. Because it was so challenging and dangerous, riders and hikers were going off-trail and creating their own paths down the hill, resulting in significant habitat damage. We rerouted the entire top portion of the trail, roughing in a maintainable, smoothly flowing trail to be accessible by all users.

In June of this year, a wildfire in Laguna Coast Wilderness Park burned 50 acres of trails and habitat, including a large portion of the recently rerouted trail. Currently, sightlines across trail switchbacks are open due to removal of vegetation from fire. The loss of vegetation, in addition to making the area more vulnerable to invasive weeds, obscures the boundaries between trail and habitat, tempting users to cut through the slowly recovering habitat rather than remaining on the trail.

B) Project Description

1. Describe your project. How does your project meet the community need? What is unique and innovative about this project?

This project will address threats to the trail and habitat resulting from the fire, complete final touches on the trail reroute, and complete the closure and rehabilitation of the old section of the trail, creating a safe, enjoyable experience for all trail users while protecting and restoring native coastal sage scrub habitat.

Laguna Canyon Foundation's approach to trailwork is unique and innovative in terms of its collaboration and comprehensive, holistic approach. We recognize that Laguna Ridge Trail is only one component of a larger trail system and the park as a whole, and take into account not only the needs of the individual trail, but how it fits into the trail system and affects the surrounding habitat. We also act as a bridge between user groups, fostering communication and coexistence between the mountain biking, hiking, and equestrian communities, working closely with representatives from each. Successful completion of the Laguna Ridge project will result in healthy, protected native habitat, a safe, enjoyable trail accessible to the entire trail community, and increased resiliency in the face of future wildfires.

C) Project Goal, Objectives, Activities and Expected Outcomes

1. State **ONE** project goal. The **Goal** should be an aspirational statement, a broad statement of purpose for the project.

To restore and protect native habitat and establish a safe, enjoyable, and sustainable multi-use trail in Laguna Coast Wilderness Park.

2. State at least **One, up to Three objectives**. **You do not have to state three (3) objectives**.

Objectives should be specific, measurable, verifiable, action-oriented, realistic, and time-specific statements intended to guide your organization's activities toward achieving the goal.

Specify the activities you will undertake to meet each objective and number of participants for each activity.

Expected outcomes are the individual, organizational or community-level changes that can reasonably occur during the grant period as a result of the proposed activities or services. What are the key anticipated outcomes of the project and impact on participants?

Objective I: Complete the closure and rehabilitation of the old, badly-eroded alignment of Laguna Ridge Trail in LCWP.

Activities: Decompact the damaged area, install erosion control measures including check dams and straw wattles, and seed with native species and plant containers in select areas. Install interpretive signage to explain the trail closure and the impacts of our restoration work.

Expected Outcomes: Improved habitat, reduced erosion, and improved user experience. Closing the trail and restoring the native habitat will improve visitors' safety and enjoyment as well as reducing trail maintenance needs and restoring coastal sage scrub habitat. Interpretive signage will encourage greater understanding and appreciation of the native habitat and increase user compliance in staying on authorized trails.

Objective II: Complete fine-tuning on the 0.3 mile roughed-in reroute and address emergent threats to trail and habitat resulting from this summer's wildfire in the area.

Activities: Control erosion through straw wattles and check dams, monitor area for invasive weeds and manage as necessary, fine-tune reroute through small realignments and improved drainage, and brush and create barriers of natural materials ("naturalize") in the burned area.

Expected Outcomes: A safer, more sustainable and enjoyable trail passing through an area of healthy, native vegetation. Wattles and dams will prevent erosion damage to the burned area from water runoff from the new trail, as well as protecting the trail from fast-flowing water running through the denuded habitat and threatening to undercut the trail. Monitoring and actively managing invasive weeds will prevent them from attaining a foothold in the vulnerable, denuded burned area. Fine-tuning the trail will improve trail safety and make it ready for use. Brushing and creating natural barriers will make the trail boundaries obvious and encourage users to remain on the trail.

D) Timeline

Provide a timeline for implementing the project. State the start date and ending date of the project, include timeframes for specific activities, as appropriate.

Project Start Date: January 9, 2017

Project End Date: May 31, 2017

Plant, Seed, Sign and Materials Procurement & Preparation: January 9-19, 2017

Erosion Control & Signage Installation: January 23-February 16, 2017

Planting and Seeding: February 20-23, 2017

Trail Brushing and Erosion Control Measures: February 27-March 2, 2017

Trail Volunteer Events to "fine-tune" trail: February 12, March 12 & April 9, 2017

Burned Area Monitoring and Remediation: January 9-May 31, 2017

E) Target Population

Who will this grant serve? How many people will be impacted? Provide a breakdown: Number of Children, Youth, Adults, Seniors, Animals.

Park users include both residents and visitors, including families from diverse socioeconomic backgrounds. The majority of park users come from Orange, Los Angeles, Riverside and San Diego Counties, but we also increasingly welcome people from all over California, the United States and even the world. Trail usage in Laguna Coast and Aliso and Wood Canyons Wilderness Parks has increased threefold in the past few years, and now approximately half a million people of all ages visit the parks every year.

F) Projects in the Community

How does this project relate to other existing projects in the community? Who else in the community is providing this service or has a similar project? Who are your community partners (if any)? How are you utilizing volunteers?

The Laguna Ridge Trail project has been identified as a priority within LCF's holistic, comprehensive trails plan. Before selecting this project, we considered the unique benefits it offers to users, its surrounding habitat, and its impacts to wildlife. Our work in OC Parks is unique. We are the only group authorized to perform trail maintenance and repair within Laguna Coast and Aliso and Wood Canyons Wilderness Parks, and work closely with OC Parks staff to ensure that our goals and methods are aligned. Our volunteers are an important part of our trail program. Both one-time and trained, long-term volunteers provide support to our trail maintenance and habitat restoration team, performing both planned trail maintenance and enhancement and emergency repairs.

F) Evaluation

How will progress towards the objectives be tracked and outcomes measured?

1. Photo documentation of the project area will occur before and after work is completed.
2. Monthly progress reports will include the following quantitative measures:
 - number of check dams installed
 - linear feet of straw wattles installed
 - number of containers planted
 - pounds of seed sowed
 - linear feet of tread improved
 - square feet of area brushed/naturalized
 - number of trail structures constructed (drains, retaining walls, etc.)
 - hours of weed monitoring and management
 - summary of trail user contacts/feedback (in field and through social media)

G) Use of Grant Funds

How will you use the grant funds?

Grant funds will be utilized to purchase supplies and materials, plant materials, and interpretive signage, and to pay key personnel to accomplish the project.

III. Project Future

A) Sustainability

Explain how you will support this project after the grant performance period. Include plans for fundraising or increasing financial support designated for the project.

The project will be largely completed after the grant performance period. Completing the work now will reduce ongoing maintenance costs in the future. Future maintenance will be funded by our TrailMix program, in which individuals and corporations alike can sponsor a trail or donate to the overall program.

IV. Governance, Executive Leadership and Key Personnel/Staff Qualifications

A) Governance

Describe your board of directors and the role it plays in the organization. What committees exist within your board of directors? How does the board of directors make decisions?

The board of directors meets bimonthly, with committees meeting monthly. Committees include the executive committee, finance committee, fundraising committee, investment committee, and trails program committee. Committees develop action plans and move projects forward, and present reports, recommendations and proposals to the full board. All board decisions are made by in-person or phone votes. The board's responsibilities include overseeing the financial health of the organization, providing meaningful financial support, ensuring the strategic and annual plan support the mission of the Foundation, and supervision of the Executive Director.

B) Management

Describe the qualifications of key personnel/staff responsible for the project.

Laguna Canyon Foundation staff work closely with OC Parks staff to maintain and improve our trails in Laguna Coast Wilderness Park and Aliso and Wood Canyons Wilderness Parks. LCF trail maintenance staff are knowledgeable and experienced. Our Restoration Director has a Master of Science degree in Restoration Ecology and eight years of experience in ecological restoration and trailwork, while our trail consultant is a professional trail builder and local expert with 30 years of experience using and promoting Laguna Canyon's trails and fostering collaboration between land managers, conservationists and the mountain biking community. In 2015, LCF and OC Parks staff jointly attended California State Parks' five-day "Basic Trails Program: Management and Maintenance" training. This training is the gold standard of trail building education offered in the State, and is highly regarded by land managers throughout the region. Both our Restoration Manager and Trail Consultant attended the first phase of this training, and our Trail Consultant attended the second phase.

2016 S.L. Gimbel Foundation APPLICATION

V. Project Budget and Narrative

A) Budget Table

Line Item Request	Line Item Explanation	Support From Your Agency	Support From Other Funders	Requested Amount From Gimbel/TCF	Line Item Total of Project
Personnel: Restoration Director	62 hours at \$25/hr = \$1550 x 25% = \$387.5			\$1937.5	\$1937.5
Personnel: Trail consultant	62 hours at \$40/hr = \$2480 x 25% = \$620			\$3,100	\$3,100
Interpretive signage	\$2,000		\$1,000	\$1,000	\$2,000
Personnel: Executive director	10 hours at \$41/hr = \$410 x 25% = 512.5			\$512.5	\$512.5
Personnel: Contract crew	5 weeks at \$4200/wk = \$21,000		\$8,400	\$12,600	\$21,000
Materials and supplies - Straw wattles, check dam materials (lumber, metal posts, wire)	500 linear ft of wattles at \$1.50/ft = \$750 35 check dams at \$75 per check dam = \$2625			\$3375	\$3375
Plant materials - Native seeds and plant containers	3 lbs seed at \$60/lb = \$180 1 gallon container plants at \$6/plant x 100 = \$600		\$180	\$600	\$780
Equipment	Battery powered reciprocating saw and circular saw kit = \$428			\$428	\$428
Personnel: Trail stewardship volunteers	12 hours per event x 8 volunteers x \$26.87/hour	\$ 2579.52			\$ 2579.52
TOTALS:		\$ 2,579.52	\$9,580	\$23,553.00	\$35,712.52

B) **Narrative:** The budget narrative is the justification of “how” and/or “why” a line item helps to meet the project deliverables. Provide a description for each line item request as necessary. Explain how the line item relates to the project. If you are requesting funds to pay for staff, list the specific duties of each position. See attached SAMPLE Project Budget and Budget Narrative

1. Our restoration director will spend approximately 50 hours over the five weeks of work on the project, including materials procurement, project management, and on-site technical support, and

approximately four hours per day managing three trail stewardship volunteer days. (62 hours x \$25/hour) = \$1550, plus 25% for benefits = \$1550 x 1.25 = \$1937.5

2. Our trails consultant will spend approximately 50 hours over the five weeks of work on the project, including project management, on-site technical support and crew supervision, and approximately four hours per day managing three trail stewardship volunteer days. (62 hours x \$41/hour) = 2480, plus 25% for benefits = 2480 x 1.25 = \$3100

3. The custom built, hand-painted sign will be offered at a generous discount by a local mountain bike and sports apparel store. \$2,000 sign

4. Our executive director will spend approximately 10 hours over the five weeks of work coordinating with OC Parks and land managers and signage procurement.

5. We will hire the Orange County Conservation Corps to perform the bulk of the work. OCCC has agreed to provide in-kind labor support in the form of four workers over four weeks of work. \$4,200 week x 5 weeks = \$21,000

6. Straw wattles to prevent erosion cost \$1.50 per linear foot, and we require 500 linear feet to cover the project area. Check dam materials cost \$75 per check dam; we will build approximately 35 check dams to prevent water from eroding the trail. \$1.50 per foot of wattle x 500 feet = \$750. \$75 per dam x 35 dams = \$2625. Total = \$3375.

7. Native seeds for replanting cost \$60/lb; we will need 3 lbs of seeds. \$60/lb x 3 lbs = \$180 1-gallon container plants cost \$6 each; we will plant approximately 100 plants. \$6/plant x 100 plants = \$600. Total = \$780.

8. A battery powered reciprocating saw and circular saw kit, required to construct check dams out of raw materials, costs \$428.

9. Trail stewardship volunteers will spend three days at four hours per day installing wattles, constructing dams, and brushing along the trail perimeter to discourage users from going off-trail. The value of volunteer time in California, according to the 2015 Independent Sector estimate, is \$26.87 per volunteer hour. 8 volunteers x 4 hours per day x 3 days x \$26.87 per hour = \$ 2579.52.

2016 S.L. Gimbel Foundation APPLICATION

VI. Sources of Funding: Please list your current sources of funding and amounts.

Secured/Awarded

Name of Funder: Foundation, Corporation, Government	Amount
<i>Marisla Foundation</i>	<i>\$35,000</i>
<i>Cultural Vision Fund</i>	<i>\$80,000</i>
<i>Massen Greene Foundation</i>	<i>\$200,000</i>
<i>Orange County Community Foundation Environment Fund</i>	<i>\$5,000</i>

Pending

Name of Funder: Foundation, Corporation, Government	Amount	Decision Date
<i>Cox Cares Foundation</i>	<i>\$5,000</i>	<i>October 2016</i>
<i>The Glide Foundation</i>	<i>\$10,000</i>	<i>October 2016</i>
<i>Pacific Life Foundation</i>	<i>\$15,000</i>	<i>November 2016</i>
<i>California State Parks Foundation</i>	<i>\$7,500</i>	<i>November 2016</i>
<i>Annenberg Foundation</i>	<i>\$50,000</i>	<i>December 2016</i>
<i>Draper Community Investment Fund</i>	<i>\$50,000</i>	<i>December 2016</i>
<i>Henry and Ellen Warne Family Fund</i>	<i>\$70,000</i>	<i>December 2016</i>
<i>California Coastal Conservancy</i>	<i>\$677,400</i>	<i>January 2017</i>

Diversity of Funding Sources: A financially healthy organization should have a diverse mix of funding sources. Complete those categories that apply to your organization using figures from your most recent fiscal year.

Funding Source	Amount	% of Total Revenue	Funding Source	Amount	% of Total Revenue
Contributions	\$201125.95	34.67%	Program Fees	\$13629.40	2.35%
Fundraising/Special Events	\$5554.42	0.96%	Interest Income	\$2625.33	0.45%
Corp/Foundation Grants	\$351030.65	60.51%	Other: Sublease Income	\$3500.00	0.6%
Government Grants	\$0	0%	Other: Sale of Merchandise	\$2695.15	0.46%

2016 S.L. Gimbel Foundation APPLICATION

VII. Financial Analysis

Agency Name: Laguna Canyon Foundation

Most Current Fiscal Year (Dates): From July 1, 2015 To: June 30, 2016

This section presents an overview of an applicant organization's financial health and will be reviewed along with the grant proposal. Provide all the information requested on your **entire organization**. Include any notes that may explain any extraordinary circumstances. Information should be taken from your most recent 990 and audit. **Double check your figures!**

Form 990, Part IX: Statement of Functional Expenses

1) Transfer the totals for each of the columns, Line 25- Total functional expenses (page 10)

(A) Total Expenses	(B) Program service expenses	(C) Management & general expenses	(D) Fundraising expenses
\$892,193	\$712,330	\$168,379	\$11,484

2) Calculate the percentages of Columns B, C, and D, over A (per totals above)

- Program services (B) – A general rule is that at least 75% of total expenses should be used to support programs
- Management & general administration (C) – A general rule is that no more than 15% of total expenses should be used for management & general expenses
- Fundraising (D) – A general rule is that no more than 10% of total expenses should be used for fundraising

(A) Total Expenses	(B) Program service expenses	(C) Management & general expenses	(D) Fundraising expenses
	Columns B / A x 100	Columns C / A x 100	Columns D / A x 100
Must equal 100%	79.84%	18.87%	1.29%

3) Calculate the difference between your CURRENT year budget for management & general expenses and your previous management & general expenses per your 990 (Column C)

Percentage of Organization's <u>Current</u> Total Budget used for Administration	Column C, Management & general expenses per 990 above	Differential
11.5%	18.87 %	7.37%

If the differential is above (+) or below (-) 10%, provide an explanation:
N/A

2016 S.L. Gimbel Foundation APPLICATION

Quick Ratio: Measures the level of liquidity and measures only current assets that can be quickly turned to cash. A generally standard Quick Ratio equals 1 or more.

Cash	+ Accounts Receivables	/Current Liabilities	= Quick Ratio
\$831,993.40	\$11,214.40	1,128.91	746.92

Excess or Deficit for the Year:

Excess or (Deficit) Most recent fiscal year end	Excess or (Deficit) Prior fiscal year end
\$66,470.13	\$(140,599.85)

Notes:

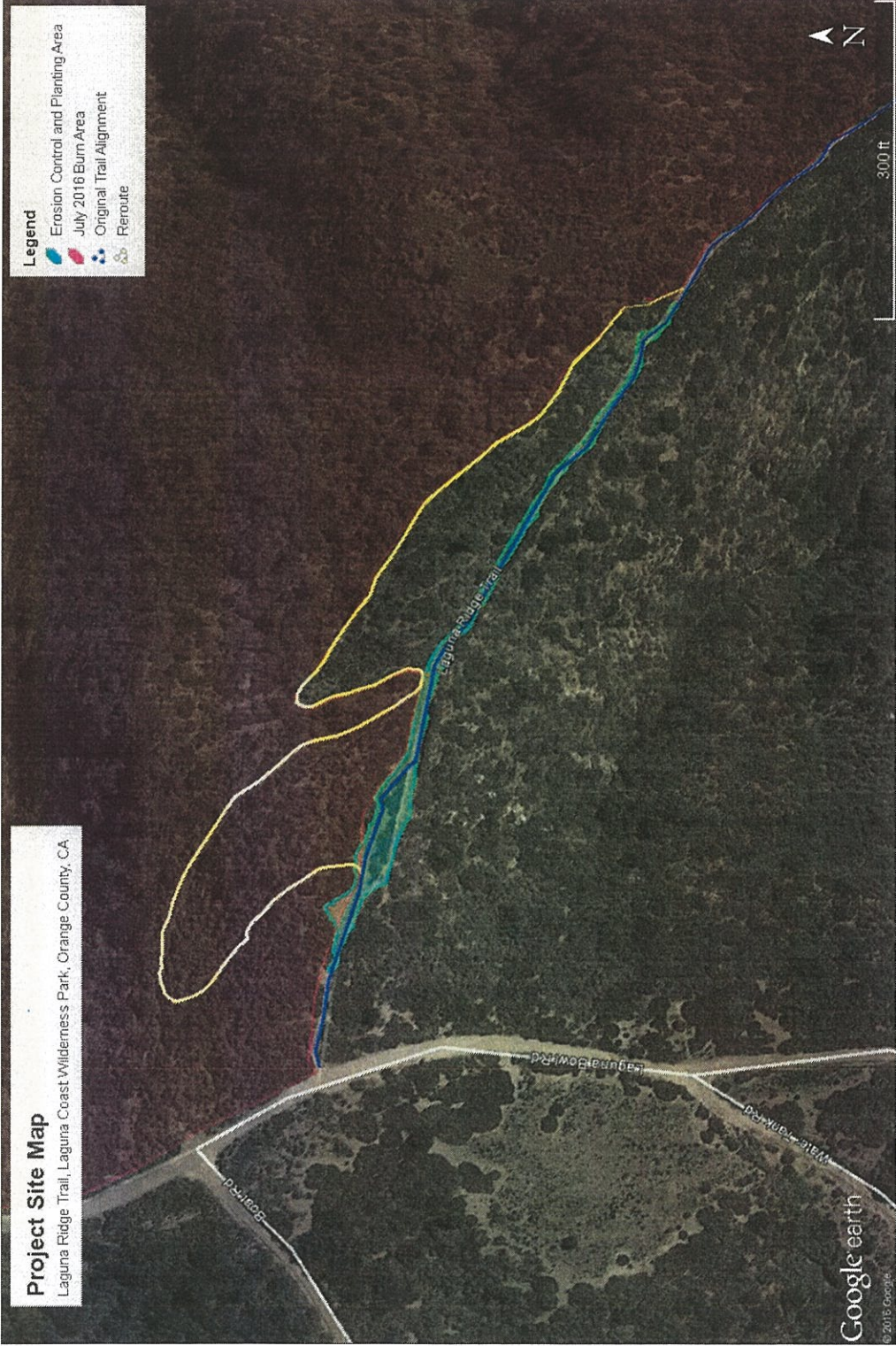
Generally, Laguna Canyon Foundation's restoration projects are funded on a reimbursement basis. The 2014-2015 deficit was due to a large amount of funding owed to us that had not yet been billed and was not reflected in our accounts receivable. Since that time, we have contracted with a new bookkeeper and implemented a new billing system to better track our accounts receivable and invoice them promptly.



September 2016

Exhibit 1. Regional Map

Gimbel Foundation Grant Application



September 2016

Exhibit 2. Project Site Map

Gimbel Foundation Grant Application

LAGUNA CANYON FOUNDATION
P.O. Box 4895, Laguna Beach, CA 92652
384 Legion Street, Laguna Beach, CA 92651
949-497-8324 Fax: 949-376-5590

BOARD OF DIRECTORS

Michelle Kremer, President '14, '15, '16
As an Individual

Elisabeth Brown, Ph.D., Vice President
As an Individual '16, '17, '18

Peter Kote, Vice President '16, '17, '18
As an Individual

Lance Vallery, Vice President '16,'17,'18
Representing Laguna Greenbelt, Inc.

Mark Draper, Treasurer '15,'16'17
As an Individual

Carolyn Wood, Secretary '16 '17, '18
Representing Laguna Canyon Conservancy

Andrew Castellano
As an Individual '16, '17, '18

Dave Csira '16,'17,'18
As an Individual

Andrew (Andy) Cmiel '16,'17,'18
As an Individual

Stacy Blackwood '16
OC Parks Director
Representing OCParks

Toni Iseman '16
Council Member (Mayor Pro Tem)
Representing City of Laguna Beach

Johanna Felder '16, '17, '18
Representing Village Laguna

Scott Ferguson '16, '17, '18
As an Individual

Charles Fletcher '16,'17,'18
As an Individual

Derek Ostensen '16, '17, '18
As an Individual

Richard Ramsey '14,'15, '16
As an Individual

Calen Offield '16, '17, '18
As an Individual

VOTING ALTERNATES

Barbara Norton '14,'15,'16
Representing OC Parks - Voting Alternate

Kelly Boyd
Representing City of Laguna Beach - Voting Alternate

Budget Comparison				
		Actuals	Budget Projections	Variance
Income		FYE June 2016	FYE June 2017	(2017 Projection minus 2016 Actual)
	4100-00 · Contributions	\$201,125.95	\$175,100.00	\$(26,025.95)
	4100-03 · Reimbursements	\$424,355.69	\$412,000.00	\$(12,355.69)
	4200-00 · Events	\$5,554.42	\$ -	\$(5,554.42)
	4300-00 · Grants	\$351,030.65	\$309,000.00	\$(42,030.65)
	4500-00 · Trust Management Fees	\$13,629.40	\$14,711.25	\$1,081.85
	4700-00 · Merchandise Sales	\$2,695.15	\$2,775.00	\$79.85
	4800-00 · Sublease Income	\$3,500.00	\$3,500.00	\$ -
	4900-00 · Investment Income	\$2,625.33	\$2,703.75	\$78.42
Total Income		\$1,004,516.59	\$919,790.00	\$(84,726.59)
Cost of Goods Sold				
	5100-00 · Merchandise COGS	\$536.81	\$552.91	\$16.10
Total COGS		\$536.81	\$552.91	\$16.10
		\$1,003,979.78	\$919,237.09	\$(84,742.69)
Expenses				
	6100-00 · Staff Expenses	\$511,339.15	\$325,571.00	\$(185,768.15)
	6200-00 · Office Operations	\$38,002.36	\$35,809.00	\$(2,193.36)
	7100-00 · Program Services	\$28,368.40	\$52,717.00	\$24,348.60
	8100-00 · Park Services	\$349,435.32	\$354,130.00	\$4,694.68
	9100-00 · Fundraising	\$10,364.42	\$5,802.00	\$(4,562.42)
Total Expenses		\$937,509.65	\$774,029.00	\$(163,480.65)
Revenue Less Expenses		\$66,470.13	\$145,761.00	\$79,290.87

Part IX Statement of Functional Expenses

Section 501(c)(3) and 501(c)(4) organizations must complete all columns. All other organizations must complete column (A).

Check if Schedule O contains a response or note to any line in this Part IX

Do not include amounts reported on lines 6b, 7b, 8b, 9b, and 10b of Part VIII.	(A) Total expenses	(B) Program service expenses	(C) Management and general expenses	(D) Fundraising expenses
1 Grants and other assistance to domestic organizations and domestic governments. See Part IV, line 21				
2 Grants and other assistance to domestic individuals. See Part IV, line 22				
3 Grants and other assistance to foreign organizations, foreign governments, and foreign individuals. See Part IV, lines 15 and 16				
4 Benefits paid to or for members				
5 Compensation of current officers, directors, trustees, and key employees				
6 Compensation not included above, to disqualified persons (as defined under section 4958(f)(1)) and persons described in section 4958(c)(3)(B)				
7 Other salaries and wages	307,039.	219,710.	87,329.	
8 Pension plan accruals and contributions (include section 401(k) and 403(b) employer contributions)				
9 Other employee benefits	34,464.	30,206.	4,258.	
10 Payroll taxes	28,580.	23,096.	5,484.	
11 Fees for services (non-employees):				
a Management				
b Legal				
c Accounting	8,463.		8,463.	
d Lobbying				
e Professional fundraising services. See Part IV, line 17				
f Investment management fees				
g Other. (If line 11g amount exceeds 10% of line 25, column (A) amount, list line 11g expenses on Sch O.)	2,385.	1,880.	80.	425.
12 Advertising and promotion				
13 Office expenses	1,046.		1,046.	
14 Information technology				
15 Royalties				
16 Occupancy	21,769.	735.	21,034.	
17 Travel	314.	239.	75.	
18 Payments of travel or entertainment expenses for any federal, state, or local public officials				
19 Conferences, conventions, and meetings				
20 Interest				
21 Payments to affiliates				
22 Depreciation, depletion, and amortization	555.		555.	
23 Insurance	5,771.		5,771.	
24 Other expenses. Itemize expenses not covered above. (List miscellaneous expenses in line 24e. If line 24e amount exceeds 10% of line 25, column (A) amount, list line 24e expenses on Schedule O.)				
a Parks and Publication	392,269.	382,077.	10,192.	
b Printing and Publicatio	39,466.	27,825.	5,106.	6,535.
c Education	16,522.	15,953.	569.	
d Website/Email/Internet	5,564.		5,564.	
e All other expenses	27,986.	10,609.	12,853.	4,524.
25 Total functional expenses. Add lines 1 through 24e	892,193.	712,330.	168,379.	11,484.
26 Joint costs. Complete this line only if the organization reported in column (B) joint costs from a combined educational campaign and fundraising solicitation.				

Check here if following SOP 98-2 (ASC 958-720)

Celia Cudiamat

From: Celia Cudiamat
Sent: Wednesday, December 14, 2016 10:45 AM
To: 'Hallie Jones'
Cc: Theresa Karasek (Theresa@lagunacanyon.org)
Subject: Gimbel Foundation Grant
Attachments: Laguna Canyon Foundation Grant Agreement 20160820.pdf

Importance: High

December 14, 2016

Hallie Jones
Executive Director
Laguna Canyon Foundation
384 Legion Street
Laguna Beach, CA 92651

Dear Ms. Jones:

Congratulations! A grant has been approved for **Laguna Canyon Foundation** in the amount of \$23,553 from the S.L. Gimbel Foundation. The performance period for this grant is **December 1, 2016 to November 30, 2017**. Additional funding beyond the performance period is not guaranteed. It is highly recommended that alternative funding sources be sought accordingly. The grant is to support the following as specified in your proposal:

Restore and protect native habitat and create a safe, enjoyable, and sustainable multi-use train in the Laguna Coast Wilderness Park.

Note from Reviewers: "Quantifiable measures listed in the evaluation should be addressed in objectives and outcomes. It is important information and should be considered on the follow up on the grant. All objectives, outcomes and evaluations should contain the same numbers. Please include this information in the evaluation of this grant. Narrative information on the evaluation of this grant. Narrative information regarding success in increases and or percentages of improvements should be included in the discussion portion of the evaluation."

This grant is subject to the terms outlined in the enclosed Grant Agreement. After you have reviewed the terms and conditions of the Grant Agreement, **please sign and date the agreement and EMAIL to me with original signature ASAP, no later than December 21**. Be sure to copy the signed agreement for your records. Funds will be released immediately upon receipt of the signed Grant Agreement.

A condition of this grant is that you agree to submit the Grant Evaluation Form which includes a narrative report and fiscal report. **The Grant Evaluation is due by December 15, 2017** and a copy will be available online.

We wish you great success and look forward to working with you during the grant performance period. If you have any questions, please call me at 951-241-7777, ext. 114, or email me at ccudiamat@thecommunityfoundation.net.

Sincerely,

Celia Cudiamat | Executive Vice President of Programs

The Community Foundation

Celebrating 75 years of Philanthropy in Riverside and San Bernardino Counties



Strengthening Inland Southern California through Philanthropy

3700 Sixth Street, Suite 200
Riverside, CA 92501
P: 951-684-4194
F: 951-684-1911
www.thecommunityfoundation.net

**S. L. Gimbel Foundation Fund
Grant Agreement**

Organization: Laguna Canyon Foundation
Grant Amount: \$23,553 **Grant Number:** 20160820
Grant Period: 12/1/2016 – 11/30/2017
Purpose: Fund the restoration and protection of native habitat and creation of a safe, enjoyable, and sustainable multi-use trail in Laguna Coast Wilderness Park.

1. Use of Grant Funds

Grant funds must be expended within the grant period, for the purpose and objectives described in your grant proposal. Grant funds may not be expended for any other purpose without prior written approval by The Community Foundation. If there are significant difficulties in making use of the funds as specified in your proposal, or if the grant funds cannot be spent within the grant period, notify us in writing promptly.

Formal requests for extensions or variances must be submitted to the Foundation's Board of Directors for approval a minimum of 60 days before the end of the grant period.

Requests for variances or extensions are reviewed on a case-by-case basis and approved by the Board of Directors. If a request is denied, unused funds must be immediately refunded to the Foundation.

Grant funds will not be expended for any political or lobbying activity or for any purpose other than one specified in section 170(c)(2)(b) of the Code.

2. Payment of Grant Funds

The grant funds will be paid in full by the Foundation upon receipt of the signed Grant Agreement. Challenge grant funds will be paid in full upon receipt of the signed Grant Agreement and upon receipt of documentation providing evidence that condition(s) of the challenge grant has/have been met.

3. Certification and Maintenance of Exempt Organization Status

This grant is specifically conditioned upon Grantee's status as an eligible grantee of The Community Foundation. The Foundation has obtained a copy of the Grantee's IRS determination letter. Grantee confirms that it has not had any change in its legal or tax-exempt status, and shall notify the Foundation immediately of any such change.

4. Final Report and Records

The Grantee will submit the Grant Evaluation report per the deadline set forth in the award letter. This report includes a narrative on outcomes based on goals and objectives set forth in the grant proposal and an expenditure report documenting use of grant funds. If equipment was purchased, copies of receipts need to be included.

5. Grantee's Financial Responsibilities

Grantee will keep records of receipts and expenditures of grant funds and other supporting documentation related to the grant at least four (4) years after completion of the grant and will make such records of receipts, expenditures and supporting documentation available to the Foundation upon request, for the purpose of conducting financial audits, making verifications, and investigations as deemed necessary concerning the grant.

6. Publicity

The Community Foundation appreciates publicity for the grant in all relevant published materials, such as brochures, newsletters and annual reports. The credit line of "Made possible in part by a grant from "The Community Foundation, Strengthening Inland Southern California through Philanthropy" is suggested. The Grantee will allow the Foundation to review and approve the content of any proposed publicity concerning the grant prior to its release, upon request. When your donors are listed in printed materials, include the Foundation in the appropriate contribution size category. Sending a brief press release to your local paper is appreciated. Please email Charee Gillens, our Marketing & Communications Officer, at cgillens@thecommunityfoundation.net with copies of any printed or publicity materials that highlight the grant. When publishing our name, please note the "The" at the beginning of our name is a legal part of our name. It should always be used and capitalized. Attaching a logo is also appreciated. Our logo can be downloaded on our website at www.thecommunityfoundation.net.

Grantee agrees to allow the Foundation to include information about this grant in the Foundation's periodic public report, newsletter, news releases, social media postings, and on the Foundation's website. This includes the amount and purpose of the grant, any photographs you have provided, your logo or trademark, and other information and materials about your organization and its activities.

7. Indemnification

In the event that a claim of any kind is asserted against the Grantee or the Foundation related to or arising from the project funded by the Grant and a proceeding is brought against the Foundation by reason of such claim, the Grantee, upon written notice from the Foundation, shall, at the Grantee's expense, resist or defend such action or proceeding, at no cost to the Foundation, by counsel approved by the Foundation in writing.

Grantee hereby agrees, to the fullest extent permitted by law, to defend, indemnify, and hold harmless the Foundation, its offices, directors, employees, and agents, from and against any and all claims, liabilities, losses, and expenses (including reasonable attorneys' fees) directly, indirectly, wholly, or partially arising from or in connection with any act or omission by Grantee, its employees, or agents in applying for or accepting the Grant, in expending or applying the Grant funds or in carrying out any project or program supported by the Grant, except to the extent that such claims, liabilities, losses, and expenses arise from or in connection with any bad faith act or omission by the Foundation, its officers, directors, employees, or agent.

8. Termination

The Community Foundation may terminate this agreement, modify or withhold payments under this grant award, require a total or partial refund of any grant funds, or all at any time, if, in the Community Foundation's judgment: a) The Community Foundation is not satisfied with the quality of the Grantee's progress toward achieving the project goals and objectives; b) the Grantee dissolves or fails to operate; c) the Grantee fails to comply with the terms and conditions of this agreement; d) the Grantee fails to comply with the requirements of any law or regulation applicable to you, the Foundation, or this grant.

9. Limitation of Support

This Agreement contains the entire agreement between the parties with respect to the Grant and supersedes any previous oral or written understandings or agreements.

I have read and agree to the terms and conditions of the Grant Agreement.

Hallie Jones
Signature

12/14/2016
Date

Hallie Jones
Printed Name

Executive Director
Title

Grant Number: 20160820
Organization: Laguna Canyon Foundation

cg
12/14/16



Strengthening Inland Southern California through Philanthropy



BOARD OF DIRECTORS

December 14, 2016

Philip Savage IV
Chair of the Board

Hallie Jones

Sean Varner
Vice Chair of the Board

Executive Director

Pat Spafford, CPA
Chief Financial Officer

Laguna Canyon Foundation

Sergio Bohon
Secretary of the Board

384 Legion Street

Laguna Beach, CA 92651

Dr. Paulette Brown-Hinds

Dear Ms. Jones:

Rabbi Hillel Cohn

The Community Foundation is pleased to enclose a grant check for \$23,553 from the S. L. Gimbel Foundation, a component fund at The Community Foundation. By cashing the grant check, you are agreeing to the conditions stated under the *Terms of Grant* which you have signed and returned.

James Cuevas
Immediate Past Board Chair

Paul Granillo

Stanley Grube

Kirk Harns

Dr. Fred Jandt

Andrew Jaramillo

Dr. Albert Karnig

D. Matthew Pim

Teresa Rhyne

Kathleen Sawa

Dr. Henry Shannon

Tamara Sipos

Beverly Stephenson

Randall Tagami

Diane Valenzuela

The completed Grant Evaluation form is due by December 15, 2017 and will be available online on The Community Foundations website under Grants/Forms. Please note that any grant variances or extensions must be requested in writing and in advance. Any remaining grant funds must be returned to The Community Foundation at the end of the grant period.

We greatly appreciate any help you can give us in publicizing the grant. Please use the following credit in any grant announcements or materials funded by the grant: "The (name of project/program) is supported by a grant from The S. L. Gimbel Foundation." You may send copies of articles printed in local papers, stories in your agency newsletter, annual report, press releases, and other publications for our files.

Please feel free to contact Celia Cudiamat, Executive Vice President of Programs at 951-241-7777, ext. 114, if you have any questions.

Sincerely,

Dr. Jonathan Lorenzo Yorba
President and CEO

Dr. Jonathan Lorenzo Yorba
President and CEO

20160820

41776

GIMB5



Confirmed in Compliance
with National Standards for
U.S. Community Foundations

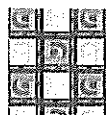
The Community Foundation
 Strengthening Inland Southern California through Philanthropy
 3700 SIXTH STREET, SUITE 200
 RIVERSIDE, CA 92501
 951-241-7777 / FAX 951-684-1911

CITIZENS BUSINESS BANK
 A Financial Services Company
 3695 Main Street, Riverside, CA 92501
 90-3414/1222

800 EZCheck® Check Fraud
 24/7 Protection for Business

PAY * Twenty-Three Thousand Five Hundred Fifty-Three and no/100 * AMOUNT
 TO THE ORDER OF DATE 12/15/2016 \$ ****23,553.00

Laguna Canyon Foundation
 PO Box 4895
 Laguna Beach, CA 92652



Jonathan Lorenzo Faber
 AUTHORIZED SIGNATURE

⑈041776⑈ ⑆122234149⑆ 244124437⑈

The Community Foundation

41776

17775	Laguna Canyon Foundation	12/15/2016	041776	
20160820	12/13/2016	Restore and protect native habitat of multi-use trail		23,553.00
GIMB	S.L. Gimbel Foundation Advised Fund		23,553.00	

CHECK TOTAL: \$ ****23,553.00

The Community Foundation

41776

17775	Laguna Canyon Foundation	12/15/2016	041776	
20160820	12/13/2016	Restore and protect native habitat of multi-use trail		23,553.00
GIMB	S.L. Gimbel Foundation Advised Fund		23,553.00	

CHECK TOTAL: \$ ****23,553.00