



2022-23
ANNUAL
REPORT

WHERE GIVING GROWS

WELCOME

The past year has been exceptional for IECF. We celebrated our 80th anniversary by establishing and growing field-of-interest funds through our Eight for the 80th campaign. Donors propelled us beyond our fundraising goal of \$640,000, contributing in excess of \$1,200,000. The campaign made an immediate and meaningful impact, providing grants to a diverse range of organizations whose programs help achieve the outcomes we seek. In the process, we learned that people want to give and appreciate the opportunities to do so through IECF.

The IECF team has accomplished so much by collaborating with the region's vast tapestry of stakeholders to address key issues impacting our underserved communities.

It is truly special being a part of a board of directors that leads with integrity, empathy, and compassion. Our board members grow together by learning about the issues, setting priorities, and awarding grants through an equity lens. Driven by our passion for policy change and meeting the critical needs of our communities, the IECF board and staff are committed to leading in the expansion of educational and economic opportunities throughout our region.

Nefertiti Long Board Chair, 2023-24

Paulette Brown-Hinds, Ph.D. Board Chair, 2022-23

The Inland Empire has been a busy place since life started to return to normal. People and organizations are determined to make a difference and make life better for the those who live, study, work, and play here. IECF has been in the thick of it, building a "culture of philanthropy" through partnerships, new funding, and the incubation of programs with significant re-granting to our nonprofit partners.

We celebrate our progress in this annual report.

This pace of activity will continue. While the IE grows, our statistics tell a story of dramatic gaps in access in everything from basic needs to higher-wage jobs that would retain our young people. Our donors and nonprofits are asking tough questions about how we can build more housing, improve health outcomes, and better connect our students to good jobs. IECF welcomes these questions and the challenge to work smarter and focus on real system change.

Guided by a clear vision of equity – racial, gender, and economic – IECF will continue to push for change with your support and partnership. Thank you for the open and honest conversations that are guiding our vision of a better future.

I hope you enjoy the stories in this annual report and are inspired by what is possible when we work together!

R. Michelle Decker President and CEO



OUR 2022-23 HIGHLIGHTS

On a mission to strengthen the IE through philanthropy

Nefertiti Long was elected chair of the IECF board of directors. A San Bernardino resident and chief operating officer at Alta Loma Enterprises, based in Rancho Cucamonga, California, Long joined the IECF board in 2017 and has chaired the foundation's Women's Giving Fund. Her professional associations include the Alliance of Black Women Accountants, the National Association for Female Executives, and Financial Executives International.

The San Manuel Band of Mission Indians gifted \$1 million to launch the **SMBMI Team Member Dependent Scholarship Fund** with IECF. In its first round of grantmaking, the fund awarded 59 scholarships, totaling more than \$500,000. "Everyone should have access to higher education," says SMBMI Vice Chairman Johnny Hernandez. "We hope this lightens the burden of funding those dreams."

Sacramento and Washington, D.C., will facilitate investments needed for the region.

A year after IECF launched the **IE Giving Hub**, the digital platform is raising awareness of local nonprofits and connecting them with supporters who want to give and/or volunteer. The IE Giving Hub provides information about organizations in Riverside and San Bernardino counties, including an overview of their work, leadership, recent tax filings and financials, and volunteer opportunities. An easy-to-use "Donate" mechanism allows the nonprofits to receive donations immediately. iegivinghub.iegives.org



From left: Laguna Food Pantry received a \$15,000 grant from the S.L. Gimbel Foundation Fund, which is administered by IECF; Nefertiti Long became chair of the IECF board of directors; donors can support enrichment programs for Inland Empire children through the IE Giving Hub.

The S.L. Gimbel Foundation added \$9.9 million to the **S.L. Gimbel Fund**, which IECF has stewarded since 2010. The fund honors the memory of Susan H. Gimbel and advances her favorite causes, including arts, education, the environment, and human dignity issues.

IECF held its first **Advocacy Day** to formally introduce the organization to lawmakers and their staffs in Sacramento. An IECF board and staff delegation met with members of the Inland Empire Caucus and the Office of the Governor. IECF believes that increasing the region's footprint in

CENTER: NEFERTITI LONG PHOTO BY ALBERT ANGELO

IECF was part of a contingent of local leaders who greeted Bill Gates, co-chair of the **Bill & Melinda Gates Foundation**, when he visited the Inland Empire in April to learn more about the region. The visit was the culmination of two earlier 2023 learning events whereupon IECF hosted numerous Gates Foundation global and national staff members. Starting in 2020, the Gates Foundation has funded and tasked IECF with building its in-house policy and advocacy arm focused on educational equity.

© GATES ARCHIVE/CHRISTOPHER FARMER

From left: Bill Gates met a contingent of community and education leaders on his visit to learn about the Inland Empire; an IECF delegation met with the Inland Empire Caucus and the Office of the Governor during the organization's first Advocacy Day.

OUR SIGNATURE FUNDS IN 2022

IECF heralds Signature Funds in recognition of the past, the present and the future

For updates and additional background, please visit iegives.org/signaturefunds.

The Inland Empire **Black Equity Fund**, in partnership with the Inland Empire Black Equity Initiative and Inland Empire Funders Alliance, advances the missions of Black-led and Black-empowering organizations through program and project support and capacity building. Seeded by IECF and The California Endowment, and now with multiple funders and donors across California, the Fund met its \$5 million fundraising goal and completed two rounds of grantmaking, awarding \$740,000 to 16 nonprofits in the first round and \$627,500 to 32 organizations in the second round.

The **Build Coachella Valley Fund** supports the critically urgent social, economic, and environmental resilience of the Coachella Valley. Board Member Jeremy Hobbs is a veteran employee of dozens of water districts in California, holds a law degree, and is a founder/president of Western Wind Foundation. He seeded and chairs this fund with the understanding of how vital environmental issues are to healthy communities.



IECF Board Chair Nefertiti Long chairs the Women's Giving Fund; former IECF Board Chair Paulette Brown-Hinds chairs the Journalism Innovation Hub + Fund; and Board Members Jeremy Hobbs, Jesse Melgar, and Ann Sheffer chair the Build Coachella Valley Fund, CIELO Fund, and Fund for a Creative IE, respectively.

Created in 2022, the **CIELO Fund** (an acronym for Cultivating Inland Empire Latino Opportunity) supports nonprofit organizations and initiatives led by and serving Latinos in Riverside and San Bernardino counties. The Fund has already demonstrated an ability to live up to its inspiring name, which in Spanish refers to the sky.

Initially, the Fund set a modest goal of raising \$80,000 its first year. However, during a standing-room-only event at The Cheech museum in Riverside, the fund exceeded its goal, raising \$300,000. Generous support from donors including the Weingart Foundation, Inland Empire Health Plan, Bank of America, and UC Riverside, and dozens of others helped the cause.

Inaugural grants totaling \$280,000 were awarded to 25 Latino-led organizations across Riverside and San Bernardino counties. Individual grants ranged from \$5,000 to \$20,000. More than 100 deserving organizations submitted applications during the fund's initial round of grant-making, underscoring the need for further investment in the Latino community. Comprising 51.5% of the population, Latinos now represent the majority of the Inland Empire.

"It's been so humbling and exciting to see the momentum and it all goes back to our



extraordinary leadership committee and the staff at IECF," says IECF Board Member and CIELO Fund Founding Chairman Jesse Melgar. Intent on proving the adage "the sky's the limit," the Fund is off to an inspiring start.

Grants awarded by the **FRiENDS of Veterans Fund** help veterans residing in Riverside and San Bernardino counties whose needs include legal aid, housing, and physical and mental health.

The **Here for Good Fund** supports IECF operations and helps the foundation lead on multiple issues. It was established in 1992 and remains a vital resource in ensuring the foundation can achieve its goals and meet the moment. The foundation could not put its attention on all the above Signature Funds without including HFG, which provides capacity for success.

The **Journalism Innovation Hub + Fund** supports Inland Empire journalism and media outlets and supports the pipeline of talent in this sector. In these days of rampant disinformation and loss of local journalism, it is essential to cultivate reliable sources of news based on fact and integrity. This fund is seeded and chaired by Paulette Brown-Hinds, former IECF board chair, as well as founder of Voice Media Ventures and publisher of Black Voice News.

The **Women's Giving Fund (WGF)** harnesses the power of collective philanthropy to support organizations serving Inland Empire women and their families. Chaired by Board Member Nefertiti Long, it is an inclusive opportunity for female donors to learn more about women's economic security issues and to focus on issues impacting women and children. Launched in 2017, the Fund has granted \$90,000 to local nonprofits for causes encompassing domestic violence, homelessness, education and basic family needs. In 2022, the WGF grantees included House of Ruth and A Better Way, organizations that assist families and individuals impacted by domestic violence. The third grantee, Inspire Life Skills Training Inc., is a program that provides a safety net for foster youth as they transition into young adults.

For updates and additional background, please visit iegives.org/signaturefunds.



PHOTO BY ALBERT ANGELI

The Fund for a Creative IE supports local arts organizations and helps them connect with their communities and funding sources. Under her informed guidance, and with contributions from the greater community, IECF will enable arts organizations to advocate at the state level, create partnerships to increase access to the arts by underserved populations, and build equitable cultural leadership.

She suggests the fund will open the eyes of arts lovers who might not know about the region's arts and culture assets and opportunities. "The purpose of the Fund for a Creative IE," she says, "is to draw attention to what's going on artistically and culturally in the Inland Empire. It's sort of a well-kept secret." For instance, the sheer breadth of the IE means Riverside residents might not be aware of the City of Coachella's amazing murals. Conversely, Coachella residents might not know about The Cheech Marin Center for Chicano Art, Culture & Industry (aka The Cheech) at the Riverside Art Museum.

BELOW: COURTESY OF MADISON AUGMENT/REDLANDS COMMUNITY NEWS

One of the Fund's first projects is to galvanize local organizations and communities to participate in the national Arts and Economic Prosperity 6 Study, along with 400 other communities nationwide. "The arts bring culture, education and inspiration to communities, but they also create jobs," Ann says. "They aren't just a frill." A ripple effect occurs when art and cultural events attract an audience that will also patronize restaurants, hotels, and transportation services. Schools and communities addressing budget



SHEFFER
ANN

ADVOCATE FOR THE ARTS

IECF Board Member Ann Sheffer's passion for the arts led her to seed the **Fund for a Creative IE**, for which she also serves as chair.

For more than 50 years, Ann has supported countless cultural and arts-related causes through the Betty R. Sheffer Foundation, the family philanthropy organization named after her late mother. Ann's interest in the arts was ignited in her high school drama department, and she went on to major in theater at Smith College, later earning a master's in arts administration and an MBA.

She was appointed to the President's Committee on Arts and Humanities during the Clinton administration and currently serves on the board of the Americans for the Arts Political Action Fund. Closer to home, she chaired the Palm Springs Public Arts Commission for six years and received a star on the city's famous Walk of the Stars proclaiming her a "public art visionary."



Opposite: Ann Sheffer marvels at the stunning Phillip K. Smith III exhibition at Palm Springs Art Museum. Above: Cheech Marin gives a tour of his collection at The Cheech museum in downtown Riverside. Right: A popular Coachella Walls mural by the Oaxaca-based artists known as La Piztola.

concerns often target the arts first, but data from the Arts and Economic Prosperity 6 Study will provide the facts and figures to advocate for the entire Inland Empire arts community.

A firm believer in the power of the arts to transform lives, Ann emphasizes the importance of keeping the arts at the forefront of any discussions about local funding priorities. "As a community foundation," she says, "we've identified several crucial issues that need action in the region, including quality job development, the advancement of justice, creating pathways for our youth and healing our communities." The Fund for a Creative IE plans to make a vital contribution across all these efforts.

BUILDING AN EQUITABLE IE

Community Impact Fund Focuses on DEI in the IE

The Community Impact Fund provides capacity-building grants with a focus on racial, gender, and economic equity. Its objective is to strengthen the voice and power of its grantees to transform their communities. IECF relies on data that reveal disparities to drive its grantmaking, programs, and partnerships. The following are updates about 2022 grantees.

Fox Theater Foundation

An IECF Community Impact Grant helps fund the Fox Riverside Theater Foundation's Las Familias en el Fox program focused on providing opportunities at the Fox for Latino families. A performance by Mariachi Sol de Mexico delighted an audience at the Fox Performing Arts Center in December 2022. After the show, the internationally renowned group's performers met with students and guests.

*A Fox Theater
Foundation
program provides
opportunities for
Latino families.*



Breast Cancer Solutions

Dedicated to removing barriers to breast cancer treatment, the nonprofit Breast Cancer Solutions has been providing patients in Orange, Riverside, and San Bernardino counties with direct financial assistance for more than 24 years. The IECF Community Impact Grant recipient strives to ensure that access to treatment is equitable as it supports clients who otherwise would not have the means and access to resources.

Assistance League of San Bernardino

A fixture in the community for more than 80 years, the Assistance League of San Bernardino assists local children in need of clothing and dental services. A recent recipient of an IECF Community Impact Grant, the all-volunteer organization relies on grants, donations, and fundraisers to run its Operation School Bell Program and operate the Dr. Earl R. Crane Children's Dental Health Center, which it helped open in 1948.



First Tee Coachella Valley

An IECF Community Impact Grant awarded to First Tee Coachella Valley – a youth development organization aimed at empowering kids through the game of golf – has resulted in more bilingual coaches leading programs, access for kids with ambulatory needs, and increased diversity among participants.

From top: Assistance League of San Bernardino provides local children with dental service, First Tee Coachella Valley diversifies golf for young people, and Breast Cancer Solutions removes financial barriers to treatment.

BUILDING AN EQUITABLE IE

Dr. Robert K. Ross is “all in” for the IE Black Equity Fund

When it comes to building healthy communities, Robert K. Ross, M.D., understands the importance of diversity, equity, and inclusion. As president and CEO of The California Endowment, the first foundation along with IECF to seed the IE Black Equity Fund, he recognizes that public health is an “all in” discipline, which means full inclusion. “Diversity assures that a broader array of talents, perspectives, and cultures becomes engaged in building the wellness of entire communities,” he says.

Time spent working as a pediatrician at a community health center in the late ‘80s and early ‘90s was pivotal in Dr. Ross’ transition from providing individual care to focusing on public health. He witnessed first-hand the devastation wrought by the crack cocaine epidemic in that era and the subsequent criminalization of Black people. “It changed my perspective as a healer and altered my career path.”

Dr. Ross spent close to a decade working in the public sector in health leadership roles prior to being appointed to his current position in September 2000. “I’ve learned that the community is the source of wisdom in addressing health issues,” he says. During his tenure at The California Endowment, Dr. Ross has provided leadership in supporting the vision of underserved communities and grassroots leaders for a healthier California and a healthier America.



The IE Black Equity Fund advances the missions of Black-led and Black-empowering organizations through program and project support and capacity building.



“I am most proud of our investments to bring healthcare to the undocumented and mental health services to schools, and to begin closing youth prisons in our ‘Schools Not Prisons’ work,” he says. He also takes pride in the increased exercise opportunities the Endowment’s Parks for All investments realize as well as the healthier eating opportunities its FreshWorks investments afford.

When buzz surrounding IECF and the Black Equity Fund reached Dr. Ross, he felt compelled to investigate. “It felt like a movement was afoot as I heard from grantee-partners, our staff, board members, and even from other foundations.” The California Endowment ultimately invested in the Fund, providing \$1 million in financial support. He envisions the Black Equity Initiative IE (the collective behind the Fund) creating an ecosystem and infrastructure for Black power-building for justice in the Inland Empire.

“The Black Equity Fund asserts the principles of the mobilization of democratic voice and the deployment of capital to drive an equity and opportunity agenda for Black communities,” he says. “It is God’s work.”

Dr. Robert K. Ross, president and CEO of The California Endowment, was compelled to invest in the IE Black Equity Fund and envisions IECF as a force creating an ecosystem of equity and justice.

BUILDING AN EQUITABLE IE

IECF promotes giving around five pillars

Building on the success of our Signature Funds, IECF is taking a longer look at building a Culture of Philanthropy in the IE, matching donor passions to nonprofit organizations' needs and innovations and applying our knowledge of the IE to affect policy and scale solutions.

We know that *how* we work can be as important as what we work on. IECF has gathered information from more than 40 nonprofit partners and plans more conversations this year.

IECF is focused on five pillars based on a policy scan completed with 35 nonprofits in 2020:



IECF's aligns with a number of regional initiatives to support economic and educational equity, health and housing services, and programs for the environment.

- 1. INCLUSIVE ECONOMIC DEVELOPMENT**
- 2. EDUCATIONAL EQUITY**
- 3. CLIMATE AND ENVIRONMENT**
- 4. HEALTH**
- 5. HOUSING AND HOMELESSNESS**

Many areas of under-investment and injustice exist in how people in the IE experience these pillars, especially when we apply a racial, gender, and geographic equity lens. There are also tremendous opportunities for innovation and change within each pillar to meet real needs for families in the IE, and more importantly, they are all connected – education affects the jobs a person can access, housing affects health, and so on.

Whether people feel like they belong to and are valued for their experience, and whether they can take action on their own and their communities' behalf, appears at the root of many problems in America.



How do we heal this sense of dislocation and alienation? How do we come together and see our humanity rather than our positions and ideologies? We believe that to make lasting change, people must be at the heart of our planning, increasing the trust, belonging, and power that they experience daily. If we ensure that progress is rooted in the values of inclusivity, social justice, and active citizenship, we will make progress.

Our nonprofit partners are design partners, ensuring IECF's work affects the region's critical issues. Connecting to regional efforts aligned with the pillars and strengthening collaboration are key to advancing our work. We look forward to engaging you in this process, adopting strategies and raising resources for the IE's Culture of Philanthropy.

State invests \$5 million in equitable growth and opportunity in the IE

The Inland Empire is receiving a major boost from the **Community Economic Resilience Fund (CERF)**, a new state initiative supporting innovation in diversifying local economies and developing sustainable industries that create good-paying, broadly accessible jobs.

The three organizations spearheading the CERF program locally – IECF, as fiscal agent, Inland Empire Growth & Opportunity (IEGO), and the Inland Empire Labor Institute as co-conveners – will establish the Inland Empire High Road Transitional Collaborative, a coalition of more than 90 organizations dedicated to fostering inclusive economic development and promoting equity, sustainability, job quality and access, and economic competitiveness and resilience throughout the region.

"We'll be able to kickstart an extensive planning initiative, prioritizing fair representation of all communities in the Inland Empire, thanks to the state's \$5 million investment in the Collaborative," says Matthew Mena, executive director of Inland Empire Growth & Opportunity. "Our ultimate aim is to pinpoint high-quality job opportunities that'll strengthen the economy, allowing everyone to have the chance to prosper."

The CERF funding award showcases the Collaborative's commitment to promoting economic resilience and inclusive growth. The state has already granted funding to communities and plans to continue supporting economic development and resilience efforts in the future.

"This funding has the potential to transform economic opportunity in the Inland Empire by prioritizing high-road jobs and the health of our people and environment," says Hillary Jenks, co-director of the Inland Empire Labor Institute. "We look forward to building an inclusive planning process that brings marginalized voices to the table."

LEADING CHANGE

The Bill & Melinda Gates Foundation leans into the Inland Empire

In 2020, the Gates Foundation began providing funds to IECF to develop a policy and advocacy arm with a special focus on educational equity. The priority for many across the region is creating access and support to complete college and high-quality training programs – key ingredients for a vibrant and healthy community and economy.

In February and April 2023, IECF hosted Gates Foundation global and national staff members for learning events that culminated with a visit by Bill Gates himself. The goal of each visit was to learn from local stakeholders, deepen relationships with regional organizations and institutions, and understand how government and philanthropic funding is being leveraged to implement quality postsecondary pathways and ensure economic mobility for the region.



IECF hosted Gates Foundation global and national staff members for an Inland Empire immersion. Bill Gates (above) joined the action. David Hernandez (below) is IECF's new regional forest and fire coordinator.

"A lot of eyes are on the Inland Empire because of our diversity and growth, and our need to close equity gaps as we grow," says IECF CEO Michelle Decker. "We are delighted that the Gates Foundation sees our work and that of our partners, as well as our potential."

Conservation Grant Safeguards Local Ecosystems

The Inland Empire's population growth over the next 20 years will place increasing burdens on desert, chaparral, and mountain ecosystems. Two national forests and portions of two others lie within its borders, hosting acres of conifer forests that sit adjacent to mountain communities and overlook dense population areas within its valleys.

The IE lags behind other California regions in its capacity to manage these ecosystems, and interventions have the potential to shift the climate impacts and risks for water, biodiversity, and wildfire.

A two-year block grant of \$1.6 million awarded to IECF through the Regional Forest and Fire Capacity (RFFC) program is intended to help the Inland Empire



© GATES ARCHIVE/CHRISTOPHER FARBER



PHOTO COURTESY OF INLAND EMPIRE RESOURCE CONSERVATION DISTRICT

increase forest and fire resilience in the face of climate change.

Serving as administrator of the funds, IECF will bring together local and regional stakeholders and distribute dollars to meet the RFFC program objectives. These include assessing needs, building a regional priority plan, and collaborating with the Inland Empire Resource Conservation District. The effort is also supported through a two-year contract with the National Fish and Wildlife Foundation.

IECF recently hired David Hernandez as Regional Forest and Fire Coordinator. A former battalion fire chief, Hernandez will lead efforts to build a coalition of partners whose scope will include work on restoration and mitigation projects.

The Inland Empire must invest in its conservation partners in order to improve its capacity to collaborate, plan, and act together to overcome large-scale environmental and climate challenges and capture its share of public resources.

IECF is managing a \$1.6 million block grant through the Regional Forest and Fire Capacity program for stakeholders to assess needs, build a regional priority plan, and collaborate with the Inland Empire Resource Conservation District.

LEADING CHANGE

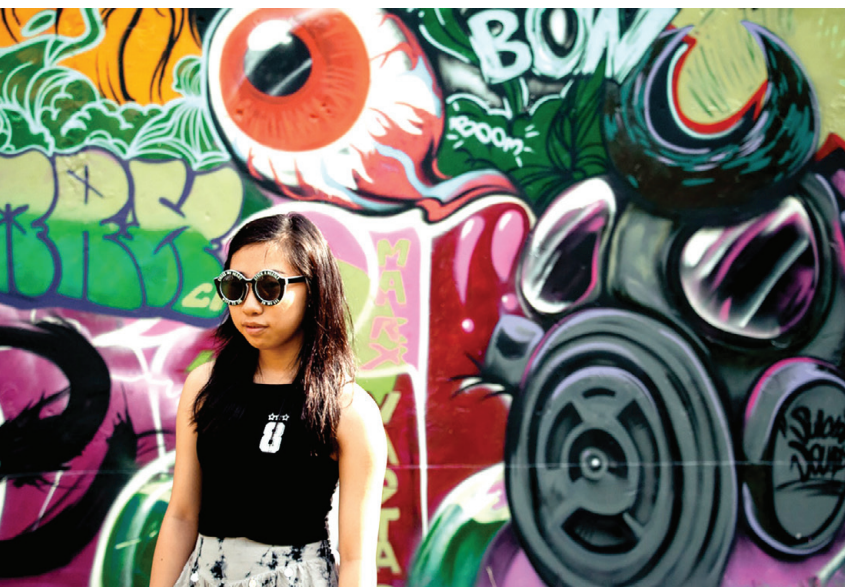
Creative Corps puts artists to work to inspire communities

Artists will soon have an opportunity to flex their creative muscle and make a difference in the broader community.

IECF is collaborating with three local art councils: Arts Connection – the Arts Council of San Bernardino County, Riverside Arts Council, and the California Desert Arts Council. Collectively, they are the recipients of a \$4.7 million grant award from the California Arts Council, and together they administer these funds for the California Creative Corps – locally known as Creative Corps Inland SoCal – a new state arts program.

The funds will support Riverside and San Bernardino County artists and nonprofit organizations to hire artists through innovative public art, media, and engagement projects and campaigns. They will integrate creatives into solutions for issues facing IE communities concerning health, climate/conservation, social equity and civic participation.

Earlier this year, Creative Corps Inland



IECF is managing a \$4.7 million grant from the California Arts Council to integrate creatives into solutions for a variety of critical issues facing Inland Empire communities.



SoCal held listening sessions to gain input to incorporate into the grant program guidelines. The application deadline was in May 2023, and grant awards were announced in late June.

Art is a fundamental tool for achieving progressive social change because it imagines a world where it has already been manifested. California Creative Corps will not only put artists to work – it will inspire Inland Empire communities to dream.

Youth Grantmakers prioritize education equity

How does IECF ensure the longevity of its mission to “strengthen the Inland Empire through philanthropy”? It encourages philanthropy among young people. In 2009, the foundation created the Youth Grantmakers program to empower local youth to become active agents of change and responsible leaders by learning about the nonprofit sector in their communities.

Education equity is the Youth Grantmakers’ focus area of support for the IE region. During the yearlong program, high school students survey their peers to understand what is important to them, learn about local nonprofits serving youth, undertake service projects, analyze grant applications, debate critical needs, and prioritize requests.

Since its inception, Youth Grantmakers has awarded \$536,884 to 180 nonprofits for an average of \$30,000 a year. About 250 students from 17 high schools encompassing San Bernardino and Riverside counties, the Coachella Valley and Idyllwild, have participated.

In 2023, Riverside grantees included Together We Rise. In San Bernardino, Big Brothers Big Sisters of the Inland Empire were among the grantees while Assistance League of Coachella Valley were among the recipients in the Coachella Valley.

By working to understand equity as a grantmaking lens, and undertaking a grantmaking process for local organizations, Youth Grantmakers can ensure all students receive what they need to achieve their full academic potential.

PHOTO BY ALBERT ANGELO



The Youth Grantmakers program empowers young people like Priscilla Vasquez of Cathedral City High School to become leaders and agents of change by learning about the nonprofit sector.

PARTNERING WITH DONORS

PHOTOGRAPHY BY ALBERT ANGELO

Their donor advised fund allows them to steer support to meaningful causes

Jack Fitzsimmons and Walter Gendell have long championed causes and organizations they believe in but felt their efforts were a bit scattershot. When the Sonoma County couple retired from corporate careers and moved to Palm Springs, they decided a more disciplined approach was in order.

Acting on advice from their financial advisor, they set out to find a community foundation through which to establish a donor advised fund and were thrilled to discover IECF. "The fact that the foundation is grounded in the Inland Empire is very important to us," Walter says. "The level of commitment shown by its board of directors is really impressive," Jack adds.

The pair determined that many of the funds IECF represents align with their areas of interest. Those include a shared passion for art, Jack's interest in environmental issues, and a special commitment to organizations that serve the gay community. They expect their pattern of giving to naturally evolve as their understanding of the foundation's mission deepens and their IECF-facilitated connections continue to grow.

"We're embarking on a new journey," Walter says, "and we've chosen IECF to help us think through the strategy. They're the right organization with the right people to move us in the direction we're interested in going."



JACK & WALTER



DANIEL

SAN MANUEL BAND OF MISSION INDIANS The Tribe's fund supports its team members' educational goals

The cultural values and beliefs that the San Manuel Band of Mission Indians hold dear inspired the SMBMI Team Member Dependent Scholarship Fund. The fund, which awards scholarships of \$3,000 to \$10,000 to students planning to attend local two- and four-year colleges and trade schools, reinforces the Tribe's support of education initiatives in the region.

"The IECF scholarship has allowed me to focus on my studies and engage in the college experience," says recipient Noah Lewis, the son of Daniel Lewis, assistant manager of transportation at Yaamava' Resort & Casino at San Manuel. "Having the ability to go to a four-year university and pursue my dream of becoming a mechanical engineer has been an amazing opportunity."

Team member dependents submit applications online, and IECF verifies applications, grants awards, and distributes the monies.

"The Tribe continues to be strategic with their giving efforts and is always thinking of ways to help their team members grow," SMBMI Chairwoman Lynn Valbuena says. "The SMBMI partners with IECF because of the foundation's reputation and ability to manage assets that impact individuals in the community."

& NOAH

HIS LEGACY GIVES CHILDREN A PLATFORM FOR EXPRESSION

Businessman, philanthropist, and performing arts enthusiast Aaron Norris lived his life at full throttle. "It never dawned on him that one thing was enough," recalls his father, Bruce Norris. "I don't think he ever quit thinking about what's next."

Aaron Michael Norris succumbed to cancer in July 2022, but not before he partnered with IECF to create the **Aaron Norris Creative Fund**, which supports arts programs in the Inland Empire.

Aaron prospered in the real estate investment and public relations fields and also had a knack for data and research – a skill that handily underwrote expenses in his 20s when he was living out his dream of performing on Broadway.

IECF fondly remembers Aaron for the leadership and dedication he provided the Give Big Riverside campaign, which raised more than \$1 million for local charities. During his illness, Aaron never felt sorry for himself, and he was deeply moved to learn he could create a legacy fund.

"Aaron was always interested in helping people find a path," his father says. "As a child, he was very shy, and acting helped him enormously. I think his fondest wish would be that some shy kid who doesn't know how to change his life would discover acting and find his way forward just as he did. The Aaron Norris Creative Fund will give a child a chance to do that."

NORRIS

AARON



PHIL SAVAGE

OUR TOP SUPPORTERS

Each has donated \$1 million or more to date.

- Estate of Molly Adams*
- Estate of Agatha J. Baxter*
- California Community Foundation*
- The California Endowment*
- City of Lake Elsinore*
- College Futures Foundation*
- County of Riverside - Housing, Homelessness Prevention and Workforce Solutions*
- County of San Bernardino - Controller*
- The Lillian D. DeSimone Trust*
- Estate of Marcia Ann Ellison*
- Kirsten Ingrid Fishler Living Trust*
- Mary C. Herdina Estate Trust*
- Foothill AIDS Project*
- Interfund Activity*
- Guide Dogs of the Desert*
- The James Irvine Foundation*
- Mr. James B. and Mrs. Marilyn S. Jaqua*
- Mrs. Dody Jernstedt and Mr. Dick Becher*
- Ms. Edith Johnson*
- The Johnson Foundation*
- Mr. Jack Long*
- Mt. San Jacinto College Foundation*
- Neuro Vitality Center (formerly Stroke Recovery Center)*
- S.L. Gimbel Foundation*
- The San Diego Foundation*
- San Manuel Band of Mission Indians*
- Shield Realty of California*
- State of California - California Arts Council*
- State of California - Treasurer*
- Fred Stebler & Eva V. Stebler Foundation Trust*
- Winifred L. Stevens Foundation*
- Mr. Kyle Webb*
- Weingart Foundation*
- WildSpaces LLC*
- Willmas Trust*

HE CHAMPIONS IECF FOR ITS TIME-TESTED STEWARDSHIP

When working with clients and their families, estate planning attorney Phil Savage IV proudly underscores IECF's longevity and regional focus. "IECF has over eight decades of history and experience to ensure that donations will be stewarded to reach their intended purposes," he says. "It gives my clients confidence that their monies will go where they want them to go and be managed well." Savage, a past IECF board chairman and IECF Professional Advisors Champion, has first-hand knowledge. As a fourth-generation Inland Empire resident, he comes from a family that has been dedicated to community involvement and local philanthropy over generations.

Savage asserts that IECF is an important intermediary between donors and the nonprofits they want to support. "IECF can also help donors find local nonprofits they may not have been aware of, deepening the impact of their donation to support causes close to their hearts."

Learn how to become a Professional Advisors Champion by visiting iegives.org/advisors



PHOTO SUPPLIED BY BRUCE NORRIS

2022 Financials

\$125 million

total in assets
posted investment returns of 6.54% for endowed assets.

Grants by Program Area

IECF provides grant support to a range of nonprofit organizations doing significant work in the region and beyond.

HEALTH AND HUMAN SERVICES
\$5,902,860

EDUCATIONAL SCHOLARSHIPS
\$7,958,963

CIVIC AND ENVIRONMENTAL BENEFIT
\$3,659,784

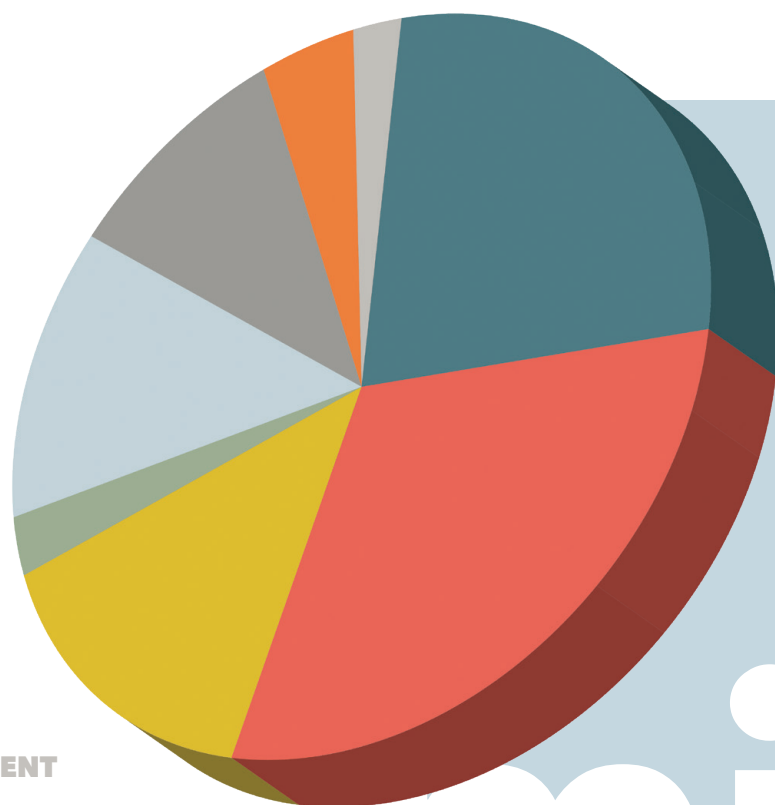
CHILDREN AND FAMILIES
\$531,334

ADVOCACY
\$3,271,839

OTHER
\$2,272,666

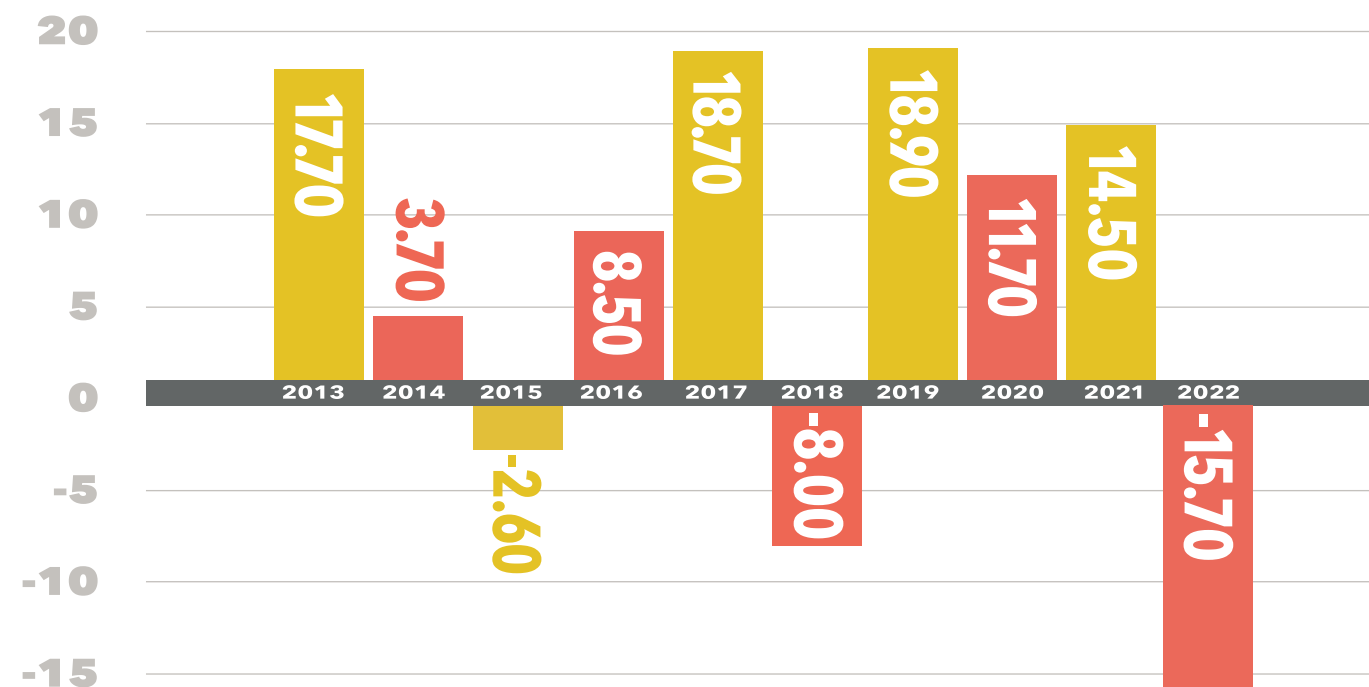
ARTS AND CULTURE
\$663,425

ECONOMIC DEVELOPMENT
\$315,077



10-Year Average 6.54% (Net of Fees)

Recognizing that in the short term, investment markets play out randomly and unpredictably, the IECF Investment Committee and Verus Advisory have structured the foundation's endowed portfolio with a long-term focus to achieve a reasonable degree of certainty. They continue to rely on sound investment policy for the benefit of donors and employ best practices as they oversee the foundation's investments.



Total in Gifts, Grants, and Scholarships

In 2022, donors gave more than \$35 million in gifts to IECF. Through the generosity of our donors, IECF has distributed more than \$24 million in grants and scholarships locally, nationally, and around the globe.

\$35 million

\$24 million

40
NEW FUNDS
CREATED IN 2022

401
TOTAL NUMBER
OF CHARITABLE
FUNDS

To view IECF's 2022 audited financial statements, please visit www.iegives.org or call 951.241.7777 to receive a copy by mail.

IECF INVESTMENT COMMITTEE 2022

LIST AS OF DECEMBER 31, 2022

IECF BOARD MEMBERS



SERGIO BOHON
Committee Chair,
Senior Financial
Advisor, SVP,
Wells Fargo Advisors

ROBERT FIELD
Public Sector
Administrator

JEREMY HOBBS
President,
Western Wind
Foundation



KATHY JOHNSON
Vice President
JS Held

DAVID BRISTOW
General Counsel and
EVP Entrepreneurial
Corporate Group

COMMUNITY MEMBERS



ROBERT FEY
Chairman,
Fey's Canyon Realtors
(deceased)

J. KIRK HARNIS
Partner,
Pacific Hydrotech
Corporation

GARY ROTH
First Vice President,
UBS Financial Wealth
Management



DWIGHT TATE
Retired
Financial Advisor

NEAL WANER
Partner,
Stout Payne Waner
Wealth Management

WAYS TO GIVE

When considering investing your money, you want choices. IECF aspires to make supporting causes easy and effective, offering a variety of immediate, annual, and legacy giving options. IECF manages about 400 funds and often works with professional advisers who establish funds for their clients through these vehicles:

- **Donor Advised Funds:** You or your heirs direct use of funds, and IECF offers guidance and IRS reporting. These funds make an immediate impact and support causes over time.
- **Field of Interest Funds:** Supports multiple nonprofits focused on an issue or a designated fund restricted to a specific organization through yearly grants.
- **Endowed Funds:** Establish any type of fund as an endowment that generates grants or scholarships in perpetuity through stock and bond investments. Direct where monies go or rely on IECF expertise to identify areas of greatest need.

If you want to help your community without having to conduct extensive and constant research into nonprofit organizations, you can contribute to the **Community Impact Fund**, through which IECF's board of directors responds to the most critical needs in the region as they arise.

Appreciate a strong IECF building a "culture of philanthropy" in the Inland Empire? Consider giving to the **Here for Good Fund**, which provides annual support and community leadership on multiple issues, including advancing innovation and nonprofit capacity-building through regional fundraising and advocacy.

You needn't have a considerable cache of cash to make a difference. Other tangible assets can be put to philanthropic use. Perhaps you have stocks and bonds, real estate, an IRA account, intellectual property, or other assets of value. You can make a planned giving contribution through a bequest in a will or trust, retirement plan or life insurance beneficiary designation, charitable gift annuity, or charitable remainder trust. Even modest amounts can yield significant impact over time.



Scan this QR code to learn more about endowments, donor-advised funds, field-of-interest funds, scholarship and signature funds, and many other ways to give with cash and other assets.

Those wishing to establish a fund can contact Brie Griset Smith, senior vice president of charitable giving, at IECF headquarters in Riverside (951-241-7777); Jose Marquez, director of planned giving, also at IECF headquarters in Riverside; John McGuirk, regional charitable officer at IECF's Coachella Valley office (760-836-2400); or Darcy McNaboe, regional charitable officer at IECF's San Bernardino office (909-453-2400).

BOARD OF DIRECTORS

LIST AS OF JANUARY 1, 2023



NEFERTITI LONG
BOARD CHAIR
Chief Operating Officer
Alta Loma Enterprises

JEREMY HOBBS
VICE CHAIRMAN
Founder and President
Western Wind Foundation

KATHY JOHNSON
CFO
Vice President, J.S. Held



TOMÁS D. MORALES, PHD
SECRETARY
President of California State
University, San Bernardino

LILIANA ANDRIANI
Chief Executive Officer
Angel Jewelers

DORA BARILLA, DRPH
Executive Director
Partners for Better Health



PAULETTE BROWN-HINDS, PHD
IMMEDIATE PAST BOARD CHAIR
President & Publisher
Voice Media Ventures

ROBERT FIELD
Public Sector
Administrator

BRIAN MCDONALD
Vice Chairman
Chemehuevi Indian Tribe



JACOB MEJIA
Vice President of Public and
External Affairs Pechanga
Development Corporation

JESSE MELGAR
Senior Adviser
California 100

MARCO ROBLES
(Retired)
Public Affairs Director
Cardenas Markets



ANN SHEFFER
Philanthropist

NEAL WANER
Partner
Stout, Payne, Waner

JOSEPH R. WILLIAMS
Trustee
San Bernardino Community
College District

IECF Staff

R. MICHELLE DECKER
President and CEO

LAURIE ALDERN
Senior Communications
Associate

KELSEY BATES
Finance and Data Analyst

ALENNY CADAG
Accounting Supervisor

CELIA CUDIAMAT
Senior Vice President,
Grants and Community Impact

JULIAN Y. CUEVAS
Director of Policy &
Governmental Affairs

YASMEEN DABBAS
Program Associate

CHAREE L. GILLINS
Marketing and
Communications Director

MAITE GRACIAN
Charitable Giving Associate

BRIE GRISET SMITH
Senior Vice President,
Charitable Giving

DAVID HERNANDEZ
Forest and Fire Coordinator

JOSE A. MARQUEZ, CSPG
Director of Planned Giving

DARCY MCNABOE
Regional Charitable Giving
Officer, San Bernardino

JOHN MCGUIRK
Regional Charitable Giving
Officer, Coachella Valley

PAULA MYLES
Senior Vice President,
Finance and Stewardship

KIM POTTER
Executive Assistant/Office
Manager

DENISHA SHACKELFORD
Youth Initiatives Manager

MICHAEL WIAFE
Government & Community
Relations Fellow

COACHELLA VALLEY OFFICE

41-550 Eclectic Street
Palm Desert, CA 92260
P: 760.836.2400

RIVERSIDE CORPORATE OFFICE

3700 Sixth Street, Suite 200
Riverside, CA 92501
P: 951.241.7777

SAN BERNARDINO OFFICE

320 N. E Street, Suite 203
San Bernardino, CA 92401
P: 909.453.2400



iegives.org



[/inlandempirecf](https://www.facebook.com/inlandempirecf)

Copyright © 2023 Inland Empire
Community Foundation.
All rights reserved.

2022-23
ANNUAL
REPORT

WHERE
GROWING
GROWS

